


# Personal reflections on cycle advocacy and cycle communities

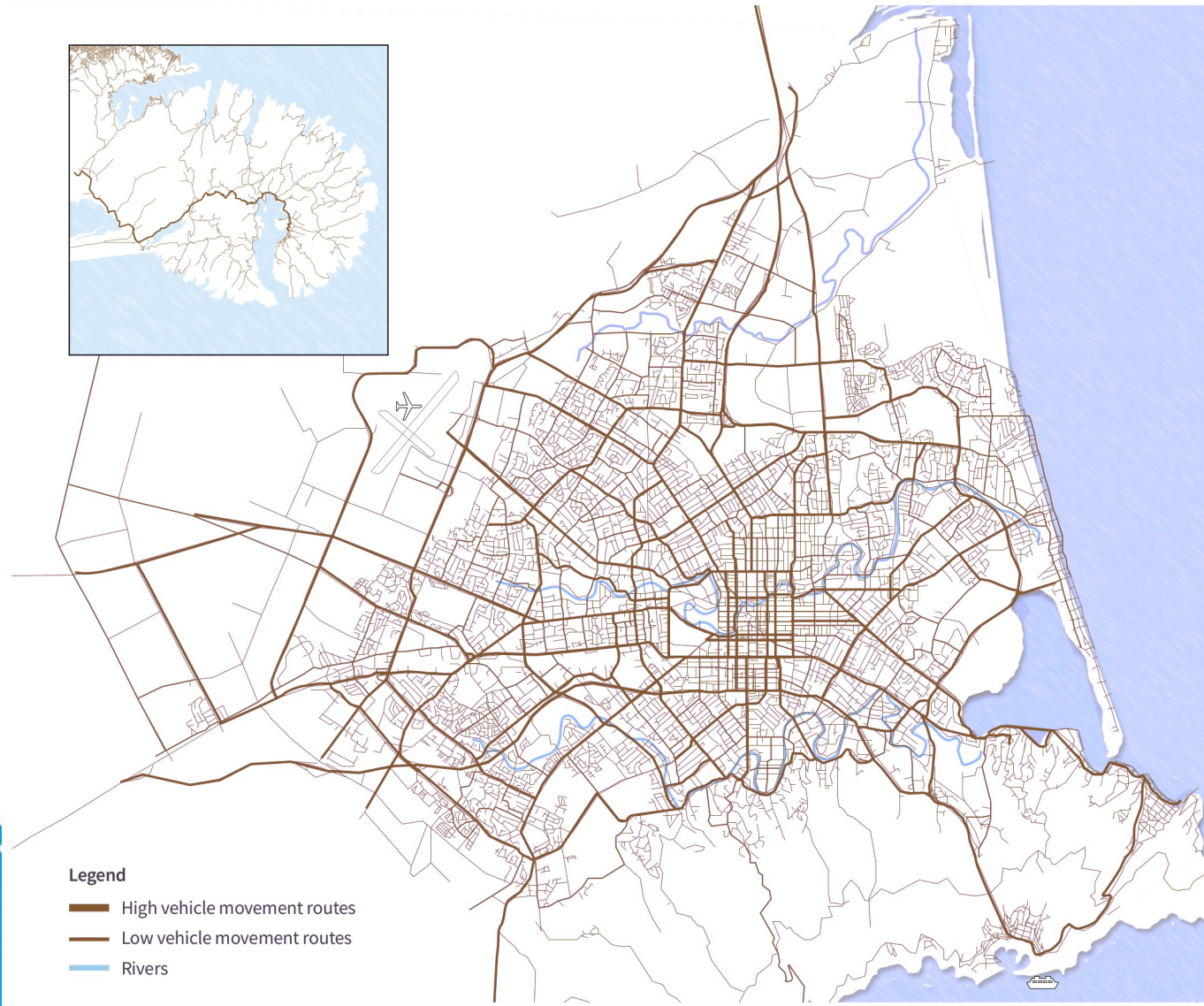
Presentation to CAN Do, Auckland  
Stephen Wood, March 2026

- Lived in Ōtautahi Christchurch in 1980s, 30 years elsewhere, then came back
  - Loving being back in the “cyclopolis”. Retired - I ride my bikes more than I drive.
  - Recreational, commuting, utility, touring, but not much competitive riding.
  
  - Involved in a number of cycling groups and communities
  - Active in submissions and presentations to councils and community boards
  - Also on stake holder groups for PT with E-Can and for Waimakariri DC
  - Active in “Wednesday Wheelies” recreational group rides, as a group leader
  - Active in Spokes Canterbury and in Cycling Action Network
  - Connected with other riding groups “Friday Night Bikes”, Blind Low Vision
  - Connected with recycling groups - RAD bikes and Aranui Bike fixup
  
  - I’m also getting back into fixing up some project bikes, lately a steel tandem.
- 

# Vulnerable Road Users

Presentation to the Christchurch City Council  
Stephen Wood, March 2026

Figure 1. Ōtautahi Christchurch and Te Pātaka-o-Rākaihautū Banks Peninsula Transport Network 2024



2429 km of roads  
~4000km footpaths?  
~75km Major Cycle Routes  
(of planned 100km!)

3 motorways  
A few State Highways  
ALL other CCC roads are  
shared space

# DSI Crashes in CCC area

- Number of deaths in CCC area is low, but that is only the tip of the iceberg
- Fatality data from MoT summary
- Crash data from CAS database

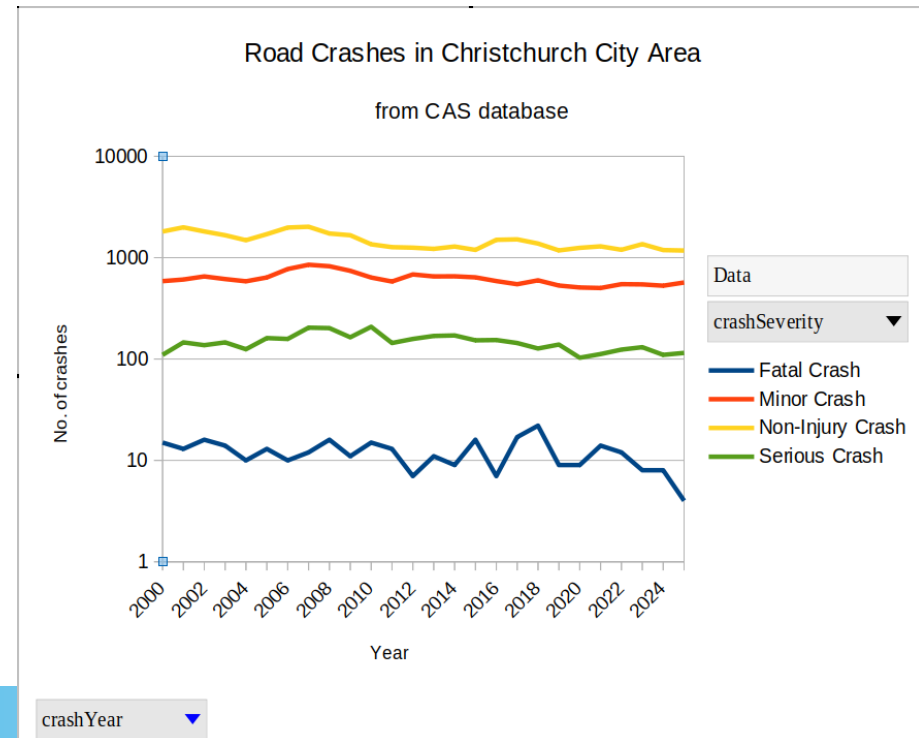
crashYear	Fatal Crash	Minor Crash	Non-Injury Cr	Serious Cras	Total Result
2000	15	587	1813	110	2525
2001	13	609	1993	146	2761
2002	16	653	1815	137	2621
2003	14	615	1666	146	2441
2004	10	585	1486	125	2206
2005	13	638	1707	161	2519
2006	10	773	1982	158	2923
2007	12	852	2019	204	3087
2008	16	823	1732	202	2773
2009	11	742	1664	164	2581
2010	15	637	1356	208	2216
2011	13	582	1270	144	2009
2012	7	684	1255	158	2104
2013	11	653	1221	169	2054
2014	9	655	1288	171	2123
2015	16	640	1194	153	2003
2016	7	588	1500	154	2249
2017	17	547	1516	144	2224
2018	22	598	1379	127	2126
2019	9	531	1179	139	1858
2020	9	508	1250	103	1870
2021	14	502	1294	112	1922
2022	12	548	1197	124	1881
2023	8	545	1361	131	2045
2024	8	529	1189	110	1836
2025	4	569	1176	115	1864
<b>Total Result</b>	<b>311</b>	<b>16193</b>	<b>38502</b>	<b>3815</b>	<b>58821</b>

Deaths for calendar years (\* figures for current, incomplete, year/month).

Crash month Role Age group Gender Road type

Copy CSV Search: christchurch

Local body area	Role	2022	2023	2024	2025	2026*
Christchurch	Cyclist	4	1	1	1	0*
Christchurch	Driver	5	5	4	1	0*
Christchurch	Motorcyclist	3	1	1	1	0*
Christchurch	Passenger	0	3	0	1	0*
Christchurch	Pedestrian	0	0	1	1	0*



# Road Safety Strategies

- Last govt strategy was “Road to Zero” based on a safe-system approach.
- Current govt has new strategy

A set of principles has guided the development of New Zealand’s road safety objectives. These principles will be at the forefront of all decision-makers’ minds when designing, implementing and choosing road safety interventions and actions.

The guiding principles are:

## Principle 1

Actions should be supported by evidence and focus on the causal factors of death and serious injury

## Principle 2

Road safety should consider the economic and social outcomes sought from the road system, including the need to get to destinations efficiently

## Principle 3

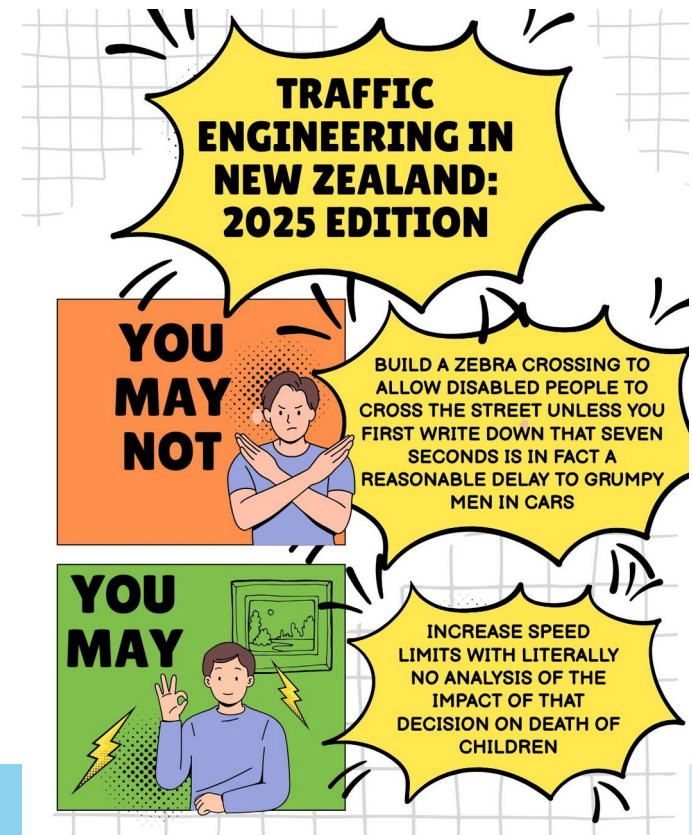
Road safety should be delivered in an efficient and cost-effective way that achieves value for money, and takes into account the regulatory burden it places on New Zealanders

## Principle 4

Road safety is everyone’s responsibility – road users also have a role to play in improving road safety outcomes

## Principle 5

Actions should consider community and road user views, ensuring there is public acceptability



The current CCC road safety action plan was written in 2020 to fit in with “Road to Zero”

# Networks for different modes

Figure 5. Primary and secondary freight routes

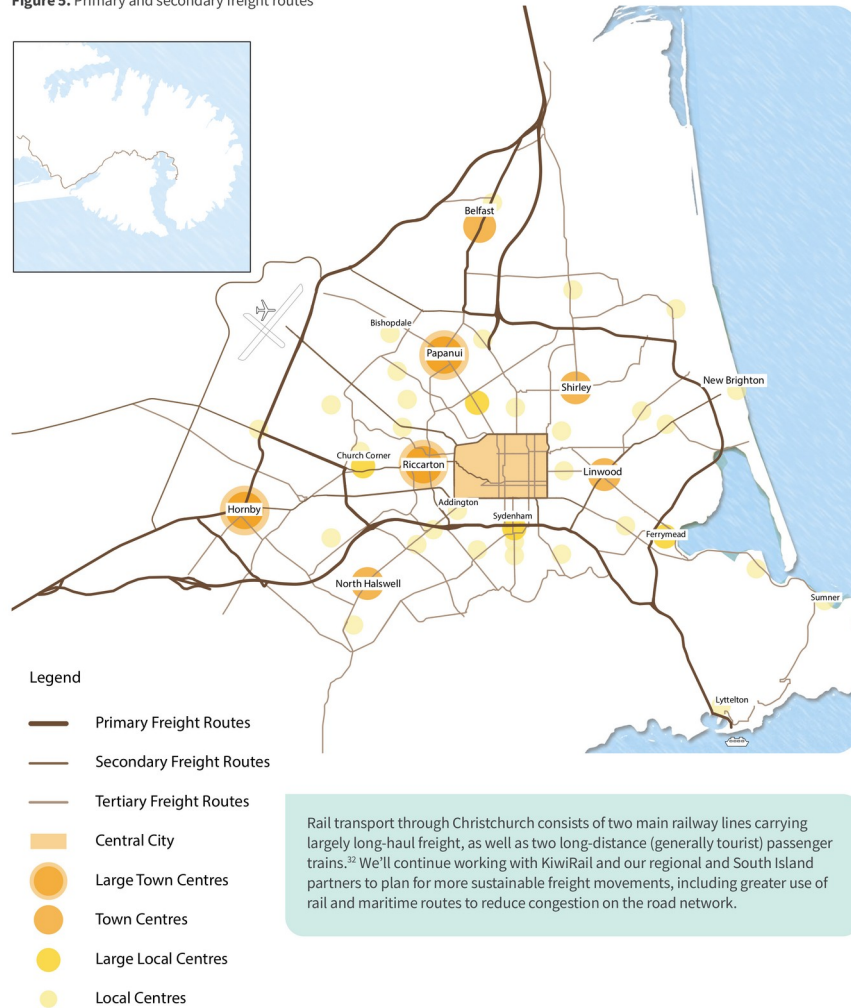
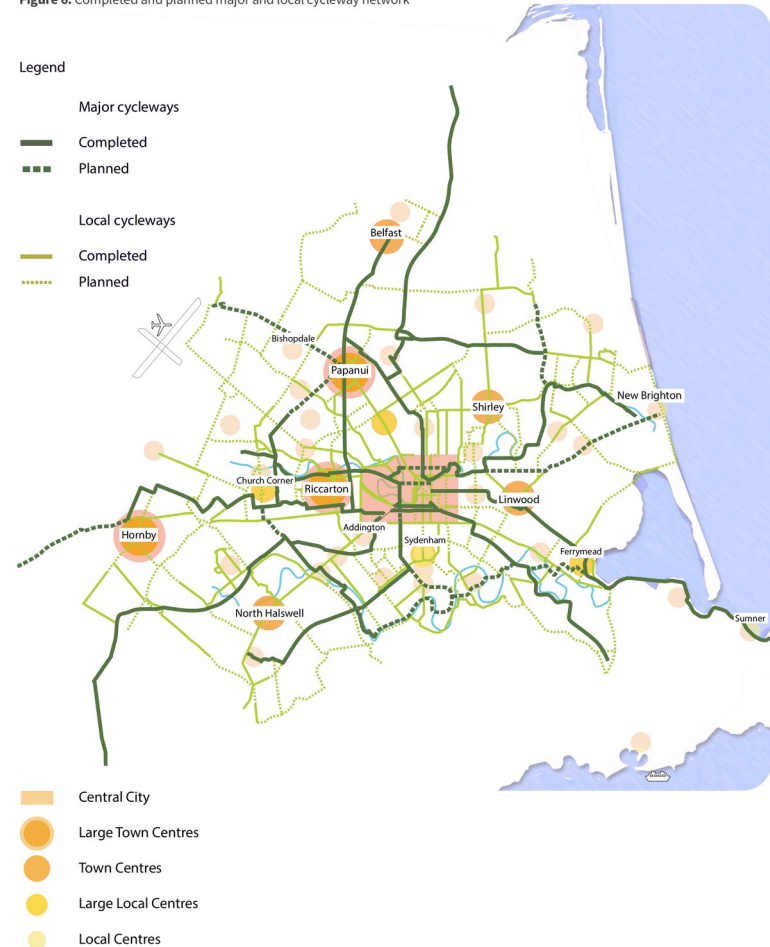
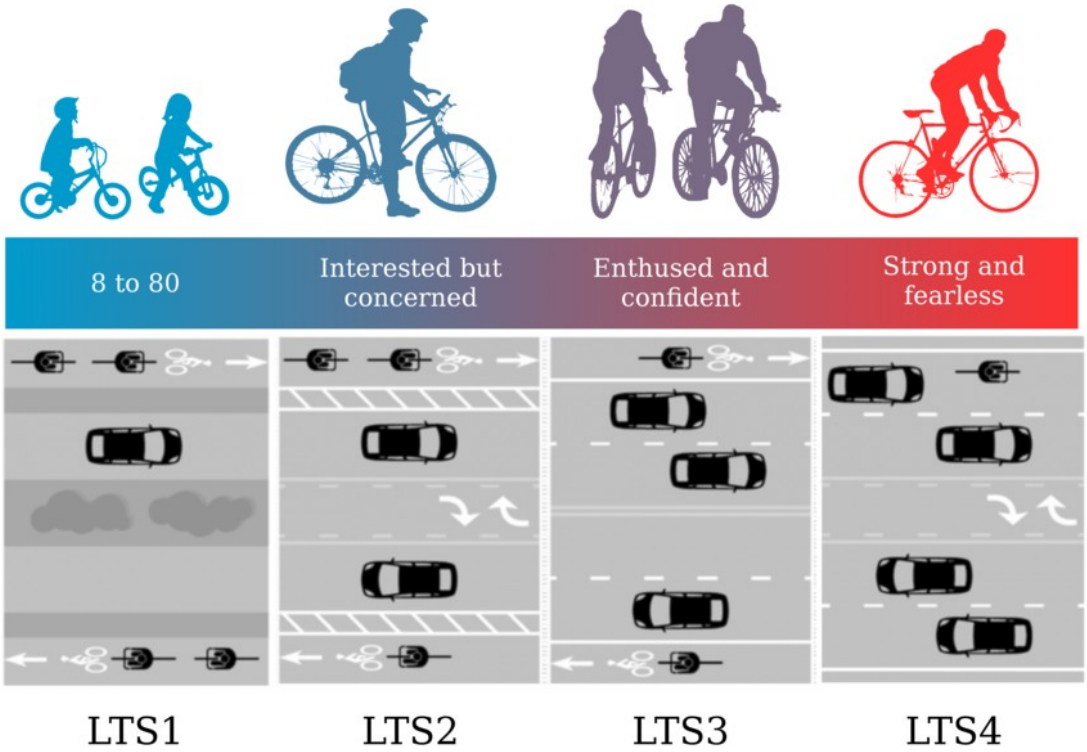
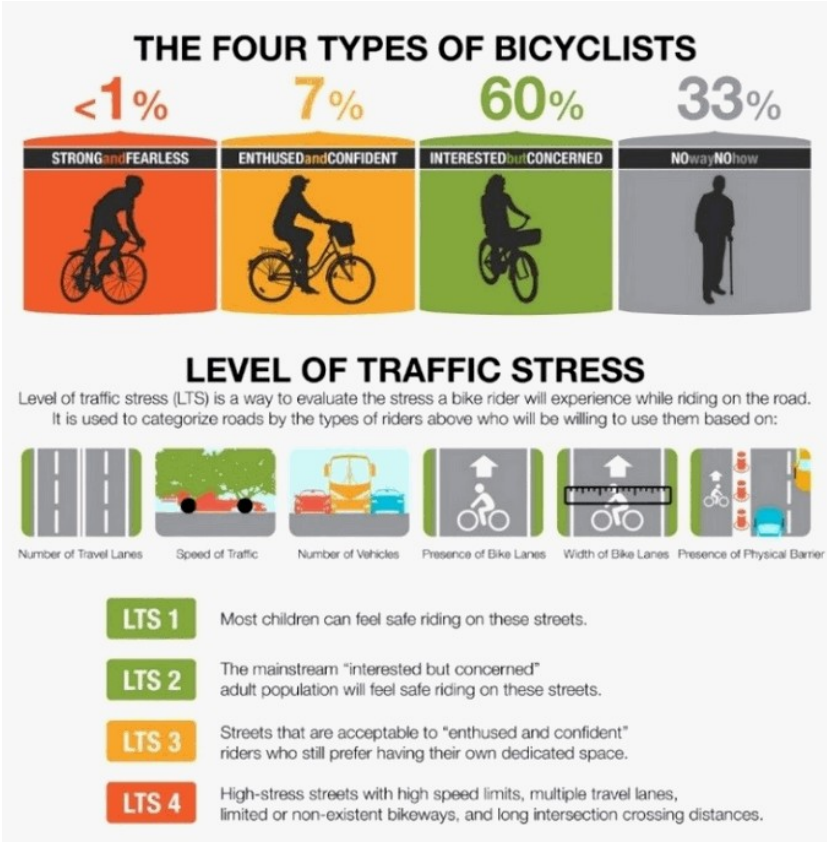


Figure 6. Completed and planned major and local cycleway network



A key recommendation of the Cycle Safety Panel was to keep these two separated!

# Not all cyclists are the same

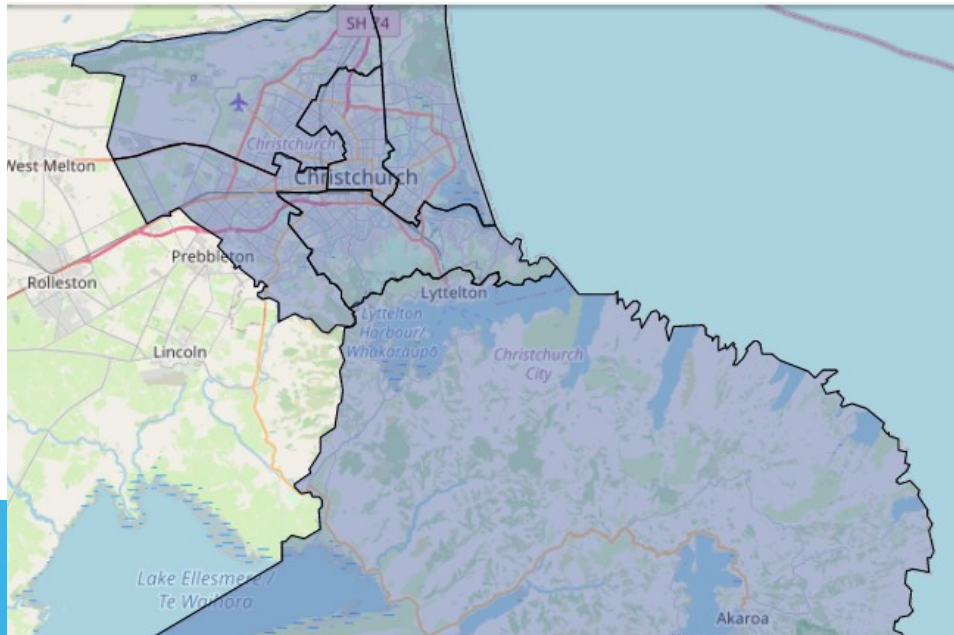


# Summary

- VRUs - pedestrians, cyclists, motorcyclists, children, elderly, people with disabilities, E-bikes & scooters, ...
- Safe sytem approach, reduce consequences of drivers making errors
- Focus areas, intersections, schools, residential streets, safe crossings, local hubs, shared zones, ...
- Aim for a connected cycle network (MCRs+local links) AND improve other roads to be better shared.
- Ensure temporary TM has a strong focus on VRU
- Build for transport choice
- A “15-minute city” isn’t a bad thing.

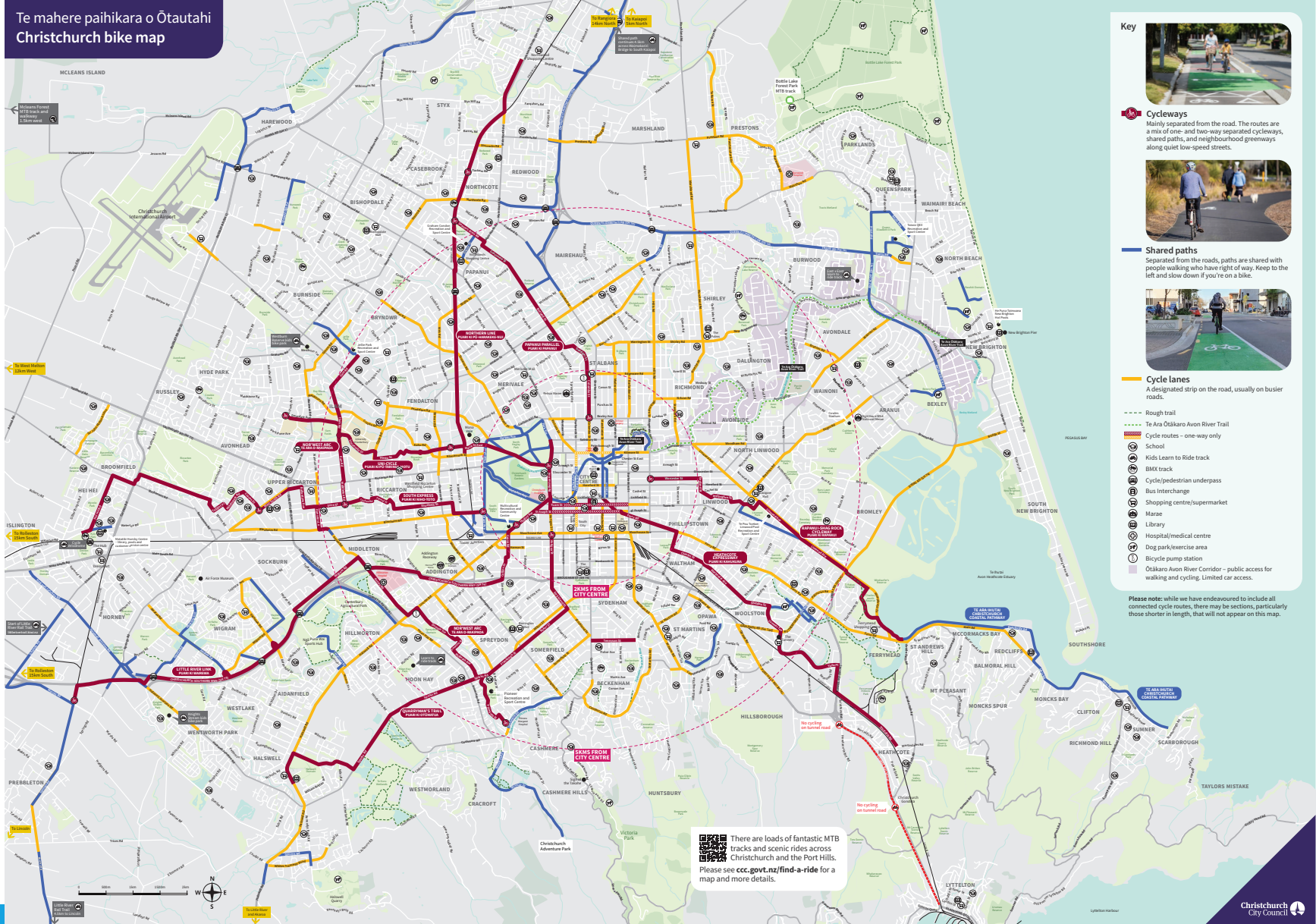
# Dealing with our Councils

- Christchurch City has 16 Councillors + Mayor
- 6 community boards (5 city/town+Banks Pen.)
- Need to understand board delegations, areas
- Neighbouring councils – Selwyn, Waimakariri
- Regional council (Environment Canterbury)



# Christchurch Cycle Map 2025

Te mahere paihikara o Ōtautahi  
Christchurch bike map



**Cycleways**  
Mainly separated from the road. The routes are a mix of one- and two-way separated cycleways, shared paths, and neighbourhood greenways along quiet low-speed streets.



**Shared paths**  
Separated from the roads, paths are shared with people walking who have right of way. Keep to the left and slow down if you're on a bike.



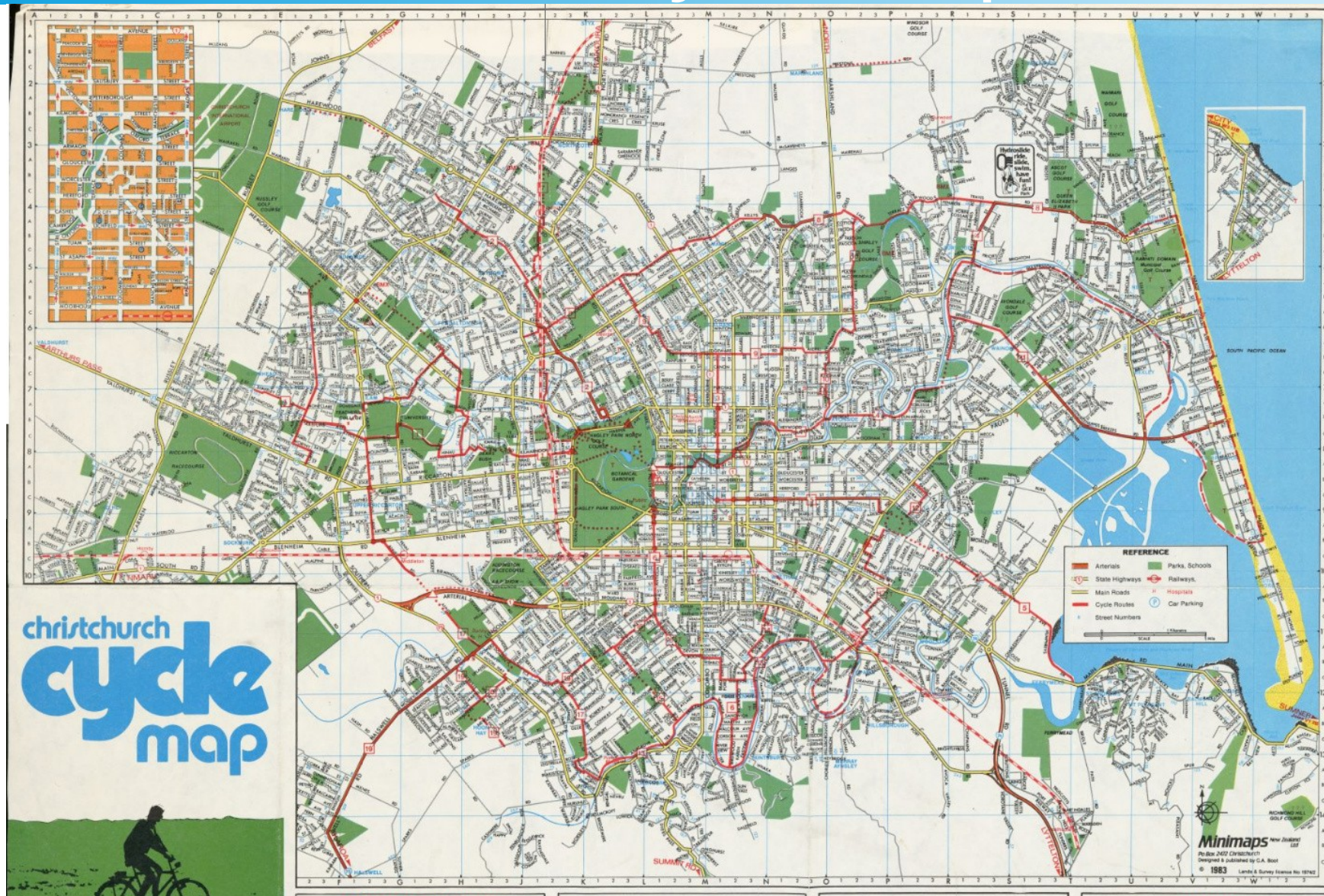
**Cycle lanes**  
A designated strip on the road, usually on busier roads.

- Rough trail
- Te Ara Ōtākaro Aven River Trail
- Cycle routes – one-way only
- School
- Kids Learn to Ride track
- BMX track
- Cycle/pedestrian underpass
- Bus interchange
- Shopping centre/supermarket
- Mosque
- Library
- Hospital/medical centre
- Dog park/exercise area
- Bicycle pump station
- Ōtākaro Avon River Corridor – public access for walking and cycling. Limited car access.

Please note: while we have endeavoured to include all connected cycle routes, there may be sections, particularly those shorter in length, that will not appear on this map.

There are loads of fantastic MTB tracks and scenic rides across Christchurch and the Port Hills. Please see [ccc.govt.nz/find-a-ride](http://ccc.govt.nz/find-a-ride) for a map and more details.

# Christchurch Cycle Map 1983



# Spokes Canterbury



## The Good

- Great relationship with CCC including community boards:
- Often invited to provide feedback on plans before they go out for consultation, or for detour routes for roadworks
- City Councillors engage with us
- Great communication with staff in travel planning department
- Presenting to Council and writing submissions -small active team
- Active in Social media
- Public feedback sessions – asking what cyclists want
- Trialling bike valet at several events



# Spokes Canterbury



## The not so good

- Lack of Central Government funding, and pressure on local budgets – possible imposed rates caps
- Connections between satellite towns and cities, e.g. between Woodend-Kaiapoi, Rolleston-Hornby, West Melton-Yaldhurst
- MCRs losing momentum
- Anti-cycling sentiment and misinformation.
- Many see cycle infrastructure as “nice to have”
- Gaps in network
- Uncertainty in local body reforms



# Wednesday Wheelies

- First ride Nov 2017, 7 riders, 10km, Robert Fleming, Lynn O'Keefe
- Now getting over 70 riders, weather dependent
- Need good group of leaders, groups limited 10-12 riders
- Usually 8 rides, different routes distances 20-45km
- New online booking automatically caps group sizes
- Retirees, mostly ebikes, many in their 70s and some in 80s



My WW rides in 2025



# Blind Low Vision – tandem piloting



# Trafinz conference 2026



[Home](#)



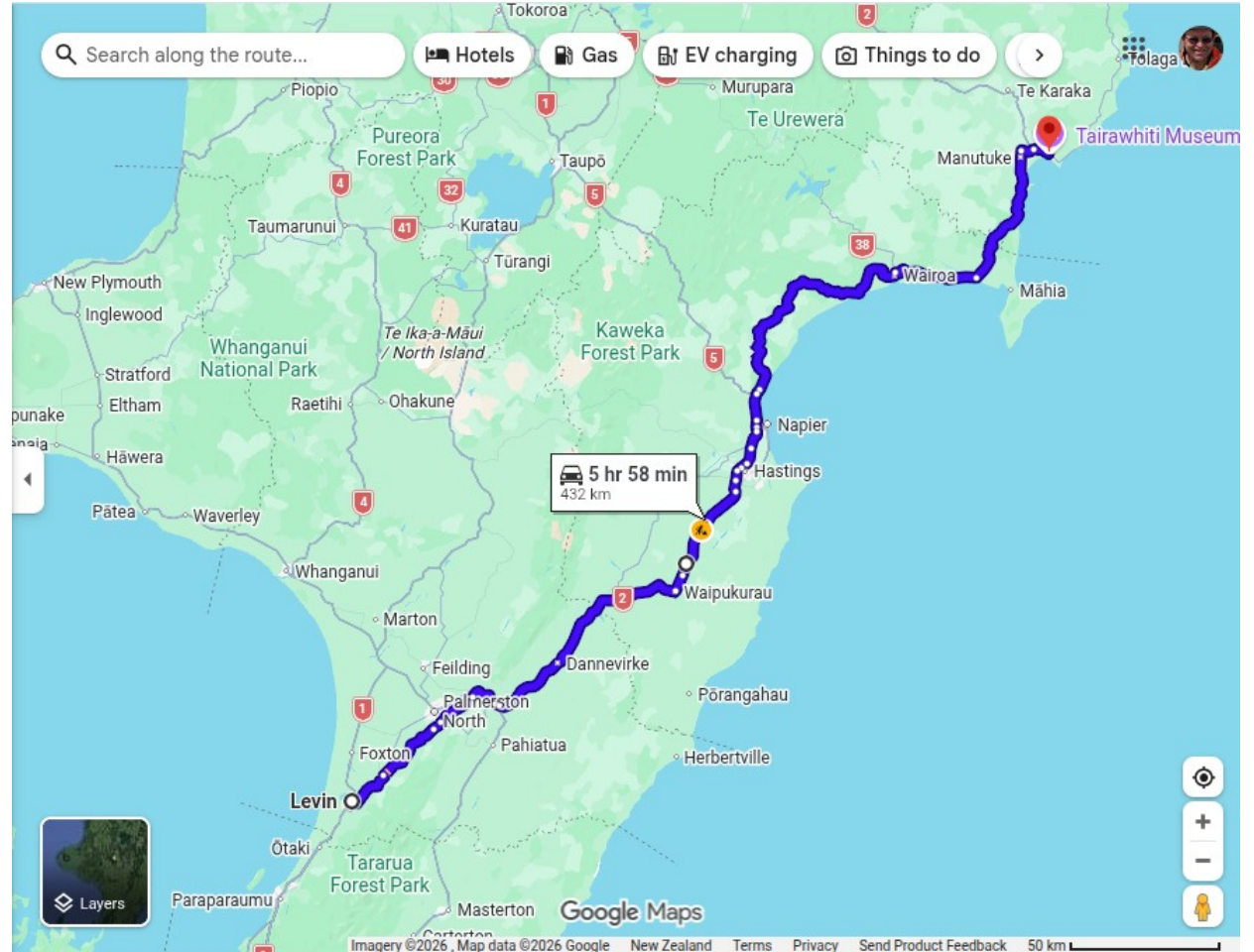
Working with what we have  
**Resilience for  
the Future**  
Transportation Conference 2026

8 – 11 March 2026  
Tākina Convention Centre  
Te Whanganui-a-Tara Wellington

**Trafinz 2026**

Is attending this annual conference a good substitute for having Cycling/walking conferences?

# My cycle touring



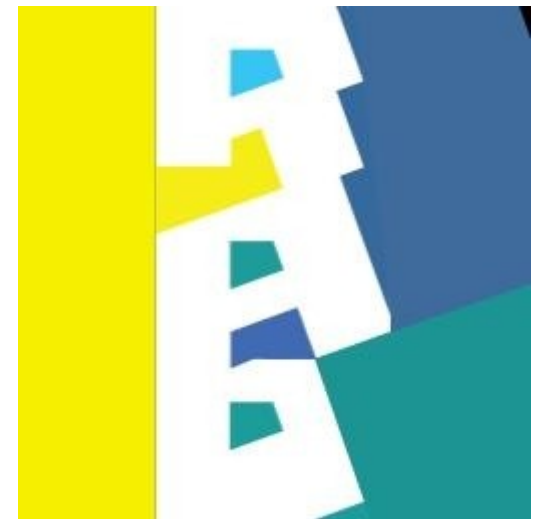
# R.A.D Bikes

- Recycle a Dunger – community bike workshop
- Moved to new rented premises over summer- Now in Sydenham
- Support other community orgs – e.g Bike bridge, Crankworx, Youthhub, Pathways, Aranui Bike Fixup

## RAD BIKES Weekly Calendar



	Monday	Tuesday	Wednesday	Thursday	Sunday
3 - 6pm	Find a Bike (all welcome!)			Find a Bike (all welcome!)	2 - 5pm  Drop In - Fix your Bike (all welcome!)
6.30 - 8.30pm	Club Night (crew only)	Salvage Squad (crew only)	Drop In - Fix your Bike (all welcome!)	Mechanic Courses (tickets online)	



# Friday Night Bikes, Urban Cyche

- FNB is last Friday of month and goes on a wandering 15km route ending at a pub or eatery. ((Shhh, a little like a “Critical Mass”))
- Urban Cyche has been doing AM coffee or PM pub meetups, but activity has dropped off.
- “Cycling the Dream” - MTB hire/ride at McLeans Island – wrote a treasure hunt app for ABC!

# Bringing back Biketober in 2026!

- Biketober in Chch was initially a CAN/Spokes collaboration
- Ran for many years, but then 2023 didn't go so well.
- Have had 2 years without it
- Working on bringing it back in 2026, coordinate events rather than take on too much ourselves
- Have established a sub-group to coordinate

