

## Small Town Cycling

The work of the Bike Whakatāne Trust and friends!



Our not so  
Quiet  
Revolution

# Where we started



- **Cycle Action Whakatāne** established around 2010
- Set up to support the development of the 4.3km Warren Cole Walkway
- Ran a community workshops with Paul McArdle and Patrick Morgan attending
- Became a trust in 2013 to complete projects
- Supported Bikes In Schools (Apanui School), Bike Park Project and Onepū MTB Park Project



- De-registered in 2016

# Our organisation



Bike Whakatāne Trust - established in 2018

We are a registered charity

## GOALS

- **Promote cycling** in Whakatane as a healthy and efficient a form of transport.
- **Encourage participation** in all types of cycling, including using bikes for everyday transport, including to school and commuting to work.
- **Provide advice and information** to the Whakatane District Council on infrastructure development, recreational plans, town vision, cycle tourism, cycle safety and other cycle related issues.

# Our trustees



**Peter Marshall**

Trustee

Lawyer

**Rex Humpherson**

Chair

Civil Engineer @ WSP

MTB Club Rep



**Richard Hamer**

Trustee

EBOP Road safety Coordinantor

Mtb Club President

**Carolyn Hamill**

Trust Secretary

WDC Councillor

Vet

**Joe Metcalfe**

Trustee

WDC Transport Planner

# Our trustees



## Derek Caudwell

Trust Treasurer  
CEO at Trust Horizon  
MTB Club Treasury



## Sasha Cessford

New Trustee  
Whakatāne / Ōhope Community Board member  
Manages Whakatāne Notice Board

# What we do and who we do it with!



- Council
- Local cycling groups
- Funders / Sponsors
- Local businesses and business network
- Schools
- Kids / Police / Road Safety
- The wider community
- Iwi and hapū
- Always looking for new opportunities

# Our relationships - Council




**Active Whakatāne**  
DISTRICT-WIDE  
TRANSPORT & RECREATION  
STRATEGY

[whakatane.govt.nz/active-whakatane](http://whakatane.govt.nz/active-whakatane)











**WHAKATĀNE**  
District Council  
*Kiā Whakatāne au / ahu*

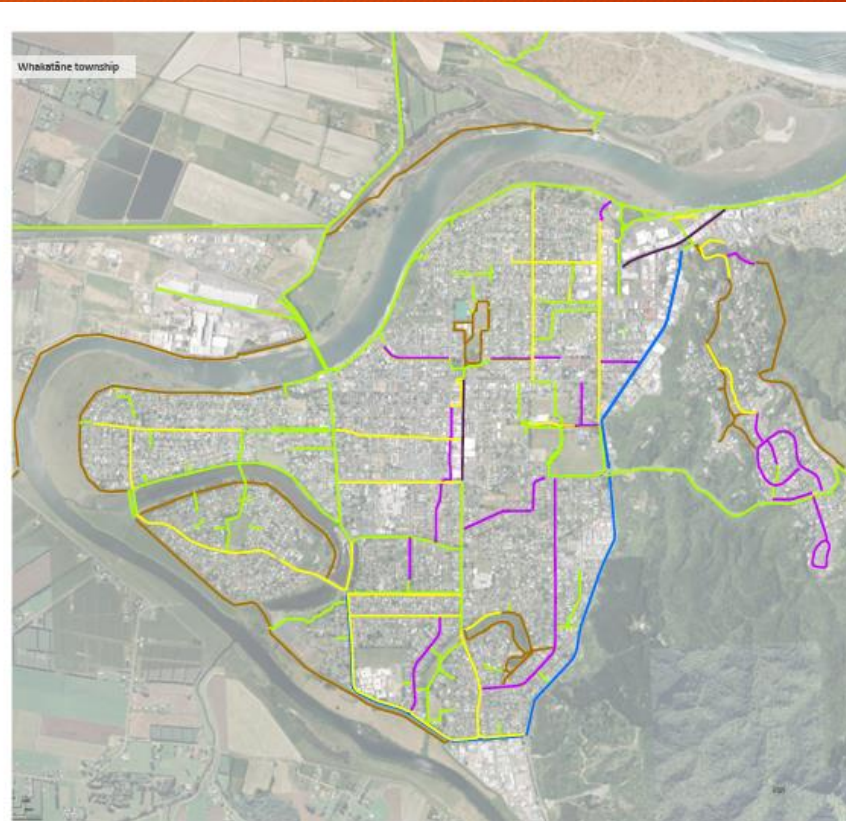
Document version: March 2020

This strategy has been developed with feedback from communities around the Whakatāne District. Representatives of Eastern Bay Villages and Inclusion Eastern Bay, the Department of Conservation, Bay of Plenty Regional Council, NZ Police, the New Zealand Transport Agency, Bike Trust Whakatāne and iwi have all contributed. The authors thank all community members whose passion for helping others has inspired this strategic effort.

All images in this document are provided by Whakatāne District Council unless stated otherwise.

Facility type	
Cycle lane	
Shared path	
Footpath (cycling allowed)	
Trail	
Neighbourhood greenway	
Low speed commercial	
Small towns initiatives: details to be developed with communities	

[View the full implementation maps online](#)



**GROWING SPORT:** Whakatane District Council has signalled it is committed to working with the Whakatane Mountain Bike Club to help it develop more facilities for the sport. D9818-07

## Walking and cycling

CONSULTATION with the community has revealed many people are keen to see the council spend more on walking and cycling activities.

Three main themes were identified: commuter transport through Active Whakatane; tourism and recreation through cycle trails; and mountain biking facilities.

Mayor Judy Turner said no other issue in the long-term plan was so "emphatically supported".

Councillors have voted to support the Active Whakatane initiative, which aims to make it easier to walk, cycle and use mobility scooters in the district. They are also supporting the establishment of a Whakatane Trails Trust to establish a network of cycling and walking trails across the district.

Councillors voted to help the Whakatane Mountain Bike Club help itself by partnering with it to further opportunities.

This will allow access to a partnership seed fund currently worth \$50,000. However, at the suggestion of councillor Julie Jukes, council voted to up this seed fund to \$100,000 in the next financial year.




# Our relationships – Council (embracing opportunities)



Article published in Whakatāne Beacon on Friday 11 August 2023

## E-Bike library official launch

HAVE you ever wanted to give an electric bike a whirl? Perhaps you just need one for a short amount of time, or are thinking about upgrading to a different model.

The new Whakatāne E-Bike Library could be right up your alley.

Launched this week, the Waka Kotahi-funded initiative will give people the opportunity to borrow an electric bike (e-bike) for 21 days.

All that's needed is a bit of paperwork and a \$100 koha to Cycling Without Age EBOP, the community partner operating the programme.

Whakatāne District Council transport planner Joe Metcalfe said the e-bike library was a fantastic opportunity for people to try an e-bike and potentially discover a new lifestyle.

"Using an e-bike is perfect for improving your health, reducing your carbon footprint and saving money on fuel," he said.

"It also enables you to arrive at your destination without getting sweaty or needing to find a carpark."

"The new e-bike library means you can borrow a bike, try it for three weeks and then decide if it's something you're keen to invest in."

Anyone who takes part in the scheme will also receive a \$100 voucher from Whakatāne Cycle Centre or Full Cycle Bikes toward the purchase of an e-bike.

The e-bike library is launching with 12 bikes of five styles.

Options include cargo bikes, ideal for carrying children and bulky gear, a trike for those with mobility or balance needs, and an e-bike that can be used on and off-road.

Each bike will have a GPS tracker, allowing the programme organisers to



**THREE-WEEK TRIAL:** Joe Metcalfe and Maureen Verstegen launched the E-Bike library yesterday, allowing community members to trial different types of e-bikes for a period of 21 days. Photo Brayden Lindsay E3860-02

create reports of how e-bikes can be used in the community.

Mr Metcalfe said the benefits of e-bikes far outweighed any perceived barriers, and with the rising cost of fuel, they were fast becoming an "excellent" choice for people from all walks of life.

"There are options for families, individuals, those with disabilities and people in later stages of life," he said.

"And the council's Active Whakatāne Strategy is helping create a more comprehensive and connected network for anyone riding a bike, so it's a really great way to live a healthier, safe and

more active lifestyle."

Maureen Verstegen, founder of Cycling Without Age EBOP, said using an e-bike had "literally changed my life".

"I moved to the area a few years ago, not knowing anybody," she said.

"So, I started the 'Non-Olympic cyclist group', and it soon grew to about 150 people.

"A number of us meet every week and go on e-bike expeditions.

"Many of us are over 60 years old, and because we have e-bikes, we can easily go back and forth over the Ōhope Hill.

"Having an e-bike gives you options – especially with harder terrain and wind conditions.

"You still need to pedal, but it really opens a whole new world," she said.

The official launch took place yesterday at the Whakatāne E-Bike Library depot in Henderson Street, Whakatāne.

For more information about the initiative and to make a booking, visit the council web-site.

The project is funded by the Transport Choices package, which is part of the Waka Ko-tahi Climate Emergency Response Fund (CERF) programme.

# workkride

NZ'S RIDE-TO-WORK BENEFIT PROGRAM



# Our relationships - Local cycling groups



# Our relationships – Funders / Sponsors



Lottery Community  
GCMS-2025-303788  
Bike Whakatane Trust

## ORIGINAL GRANT

Grant ID: LC-2025-286563

Grant amount: \$10,000.00

## REQUEST DETAILS

### What is the funding for?

To help cover the costs associated with our group delivering workshops and events which promote whanau being engaged, healthy and active, predominantly through cycling related activities across the Eastern Bay of Plenty Region. We aim to run our activities as accessible and at no cost for whanau.

Successful +  
another \$6115



**WHAKATĀNE** ✨  
**CHRISTMAS PARADE**  
**RIDE INTO THE FESTIVE SPIRIT!**  
TURN UP IN CHRISTMAS THEMED ATTIRE  
ON YOUR BICYCLE AND YOU COULD WIN  
**A \$150 VOUCHER**  
FOR FULL CYCLE BIKES!  
(1 ADULT, 1 CHILD)  
PROUDLY SPONSORED BY:



**Bike Whakatane wishes to thank**  
 **THE LION FOUNDATION**  
for granting \$28545 towards the Onepu MTB Park upgrade. You guys rock!

# Our relationships - Businesses



**ARTS & ENTERTAINMENT**

ON YER BIKE: Scenes from Big Bike Night films *Queen of the Mountain* with Annie Ford and Deluge. Photos supplied

## Get your Big Bike Film Night fix

MARKING its 12th year, The Big Bike Film Night 2020 is set to ignite the passion of cycling enthusiasts, rolling into Whakatane on Monday, February 23. Big Bike Film Night also takes place in Tauranga on Tuesday, February 24, and Rotarua on Thursday, March 5.

This much-loved film festival promises "a feast of short films devised and designed for the two-wheeled devotee", celebrating the fun, adventure, and inspiration that only bikes can bring.

From humble beginnings in 2008, The Big Bike Film Night has grown into an international phenomenon that brings a love of cycling to cinema, presenting an array of New Zealand and international

**Big Bike Film Night**  
 ■ Where: Whakamax  
 ■ When: Monday, February 23 at 6.30pm  
 ■ Tickets: [www.bigbikefilmmight.nz](http://www.bigbikefilmmight.nz)

backyard adventures in New Zealand to the breathtaking landscapes of Norway, to the lush forests of the Canadian West Coast, and we'll crown things off on the slopes of the punishing Mont Ventoux, in Southern France," said Cutler.

A highlight of this year's programme is the world premiere of *Queen of the*

### EVENTS COMING UP in Whakatane

**23 FEBRUARY** | **THE BIG BIKE FILM NIGHT**  
 6:30 pm | Whakamax | Showcasing 2.5 hours of dazzling bike films that have everything a cycle-centric audience could want - action, drama, humour, and plenty of inspiration.

**27 FEBRUARY** | **MATAATUA REGIONAL KAPA HAKA**  
 Rugby Park, Whakatane | Mataatua Kapa Haka Regional 2020 serves as the qualifying competition for Kapa Haka rōpū from across the Mataatua haka to then compete at Te Matatini, the national kapa haka competition.

**12 MARCH** | **FUNK UP THE COUNTRY TOUR**  
 8-10:30 pm | The Solar Room | Tahiri Blain and Gg White & Friends are joining forces for a cross-generational music experience across Aotearoa's north island. Two great acts colliding at the intersection of country and funk.

**E-K**



# Our relationships – Schools



## WHAKATĀNE WHEELS DAY

RIDE YOUR BIKE, SCOOTER, SKATEBOARD OR SKATES TO SCHOOL AND GET A TREAT. WEAR A HELMET TO WIN AWESOME PRIZES!

**THURSDAY, 16 OCTOBER**  
All day at Whakatāne schools

BE SAFE. BE SEEN. BE ACTIVE.  
KIA HAUMARU, KIA KITEA, KIA RANGONA

Find out more at [f Road.Safety.EBOP](#)



13 Schools  
since 2012



# Our relationships - Kids/Police/Road Safety





# Our relationships – Iwi and Hapu



## NEWS

www.thebeacon.co.nz | Wednesday, November 5, 2025 9

### New signage in latest project

LAST weekend saw the latest project led by the Bike Whakatane Trust, with new signage and information boards being installed on the Ngāti Awa Farm section of Burma Road.

The project was initiated to help cyclists clearly navigate the route, while respecting that Ngāti Awa Farm is an active working farm with regular movement of stock.

The installation of two large information boards and 48 arrow signs was completed in collaboration with farm management, and with support from Whakatane District Council.

The signage project follows the successful construction of cycle-friendly gates in December 2024.

Bike Whakatane Trustee and recently elected district councillor Carolyn Hamill said the project was an awesome example of the community identifying accessibility issues for cyclists and finding a solution that worked for all.

"The Bike Whakatane Trust kick-started the project and liaised with landowner representatives and the council to come up with a signage plan."

Ngāti Awa Farm manager Sam Philips said working with the bike trust had been great.

Ultimately the project aimed to keep walkers and cyclists on the right track as they passed through the farm, ensuring no-one became lost and keeping the farm safe for both people and our stock.

"The Trust listened to farm workers concerns of cyclists riding through the working farm and was pleased that "Keep Left" was included as a key



INFO BOARDS: Bike Whakatane trustees Derek Caudwell, Richard Hamer, Joe Metcalfe and Peter Marshall put up the large farm information boards.

Photos supplied

message on the signage."

The Ngāti Awa Farm signage project is one of many undertaken by Bike Trustees this year and was supported by a grant from NZ Lotteries.

Other bike trust projects have included supporting Wheels Days events and

Bike Ready – Cycle Education courses delivered in Eastern Bay Primary Schools, providing bike spare parts to CRew staff so they can up-cycle bikes that have been donated, co-delivering events such as Light Up Your Bike, Spring On Your Bike, World Car Free



RIGHT WAY: Carolyn Hamill puts up the last direction sign.

Day and the recent Ride The Runway event at the Whakatane Airport.

"Collaboration and relationships have been key to getting this much-needed project over the line, with Ngāti Awa, the Bike Whakatane Trust and Council all working together for better community outcomes", said Mrs Hamill.

The last event for this year's Bike Trust calendar is the Christmas Santa Parade on December 13.

**THE HEARTLAND WAY**  
*From Forest to Lake*

*Choose your way*

**BIKE THROUGH THE NAHERE**

**23-26 JANUARY**  
**ANNIVERSARY WEEKEND 2026**

# Current projects and issues

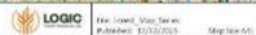


## Rawhiti Forest Unit Introduction

### Land, Values, Operational Activity and Values Information Summary



INGKA - Rawhiti



SCOOP Regional

Search Scoop

Contact About ScoopPro

Front Page Scoops Parliament Politics Regional Business Sci-Tech World Culture Education Health

SCOOP > REGIONAL

## Disappointment As Whakatāne Cycleway Shelved

Thursday, 27 February 2025, 10:12 pm  
Article: [Diane McCarthy](#) - Local Democracy Reporter

Cyclists between Whakatāne and Piripai will have to wait, possibly for years, for a new shared use path along Keeka Road.


Whakatāne District Council has instructed staff not to budget any funding in its Annual Plan 2025-2026, to carry out work over and above what it does on its other paths.

The bumpy two-kilometre path connecting walkers and cyclists from Whakatāne to beachside subdivision Coastlands has been the subject of multiple complaints to council over several years.

Piripai cyclist Harry Austin said the decision was disappointing.

# Always looking for new opportunities!



 Richard Hamer Monday 8:57 AM

There hasn't been a better time to buy a bike! - Beat the fuel crisis!

<https://www.workride.co.nz/>

to work.  
lose any bike.  
63% offset  
workride

**WorkRide - NZ's Ride to Work Benefit Pro...** ✕

Save 32-63% on any new bike or e-bike with Workride, NZ's bike benefit and ride to work scheme. New Zealand's top...

[www.workride.co.nz](http://www.workride.co.nz)

Enjoying the ride and sharing the love!



**OUR ROADS, OUR SAFETY, OUR WHĀNAU**

<https://youtu.be/Vp9BloUIQJA>

## Small Town Cycling

The work of the Bike Whakatāne Trust and friends!



# Any questions!