

CANDo 2026

Quiet Revolution

The art of making positive change in your community



Bike Auckland: What's happening in Auckland?

A story in two parts



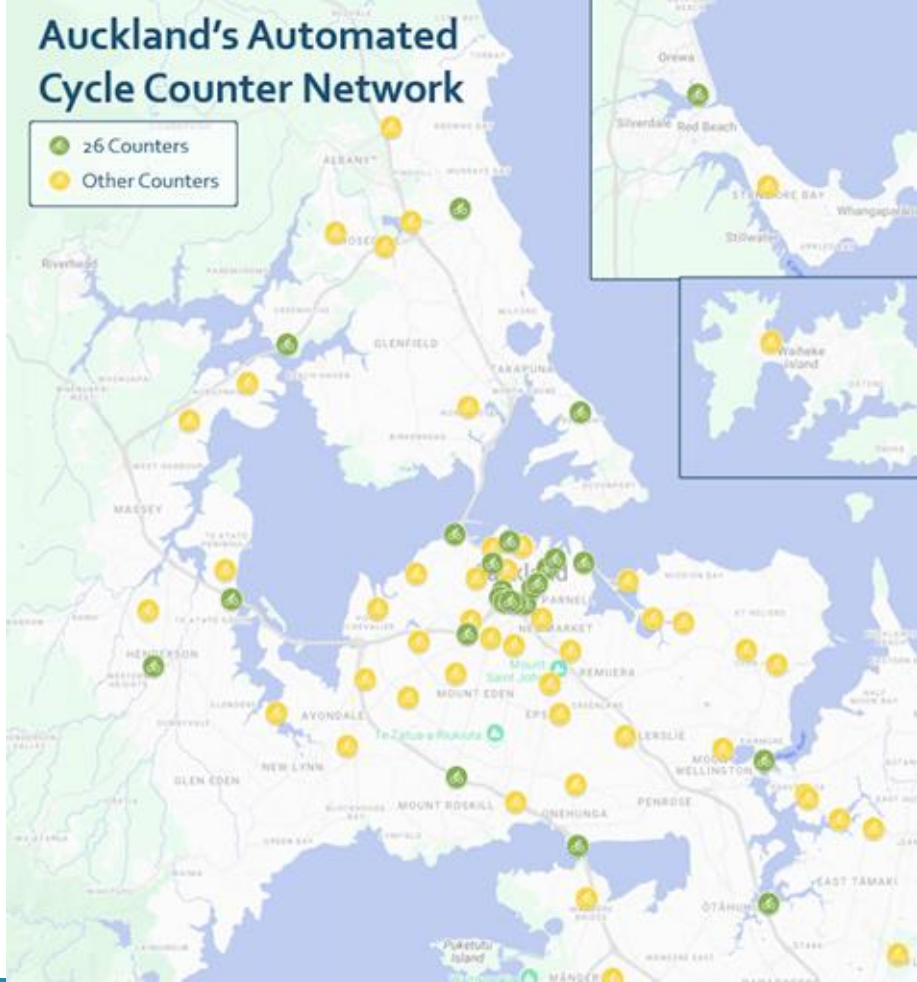
Bike Auckland Part 1:

Progress
and the
network effect



Auckland's Automated Cycle Counter Network

- 26 Counters
- Other Counters

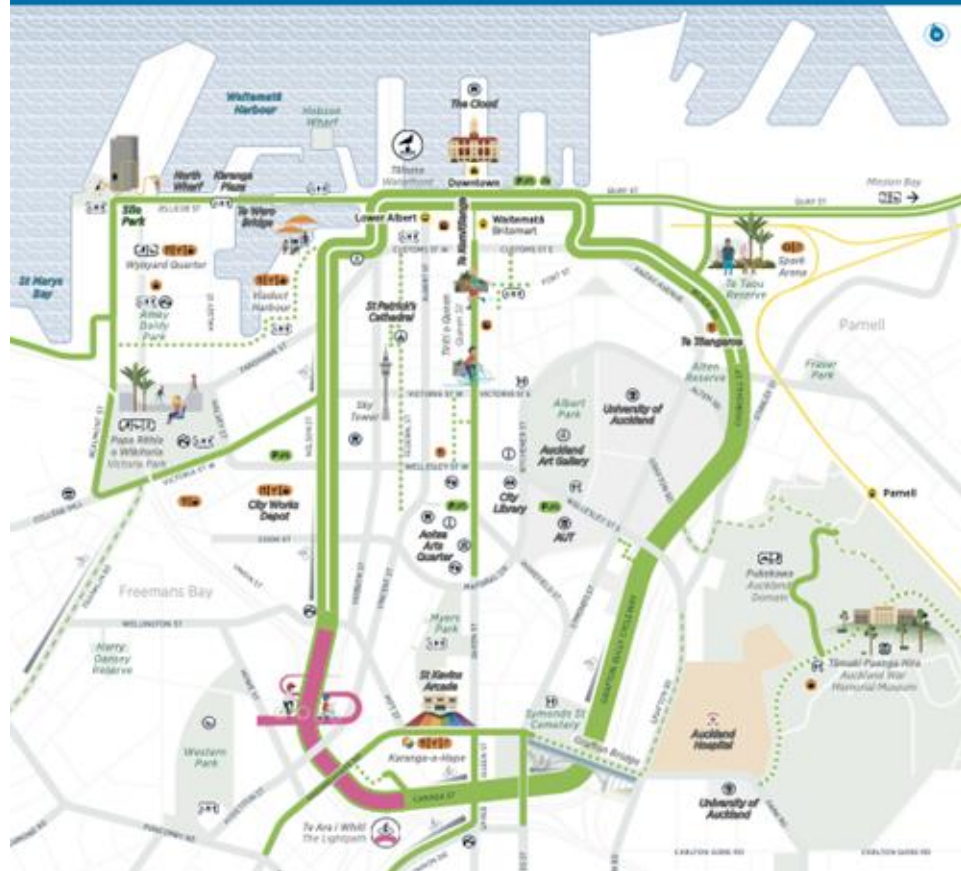


Cycle Counters





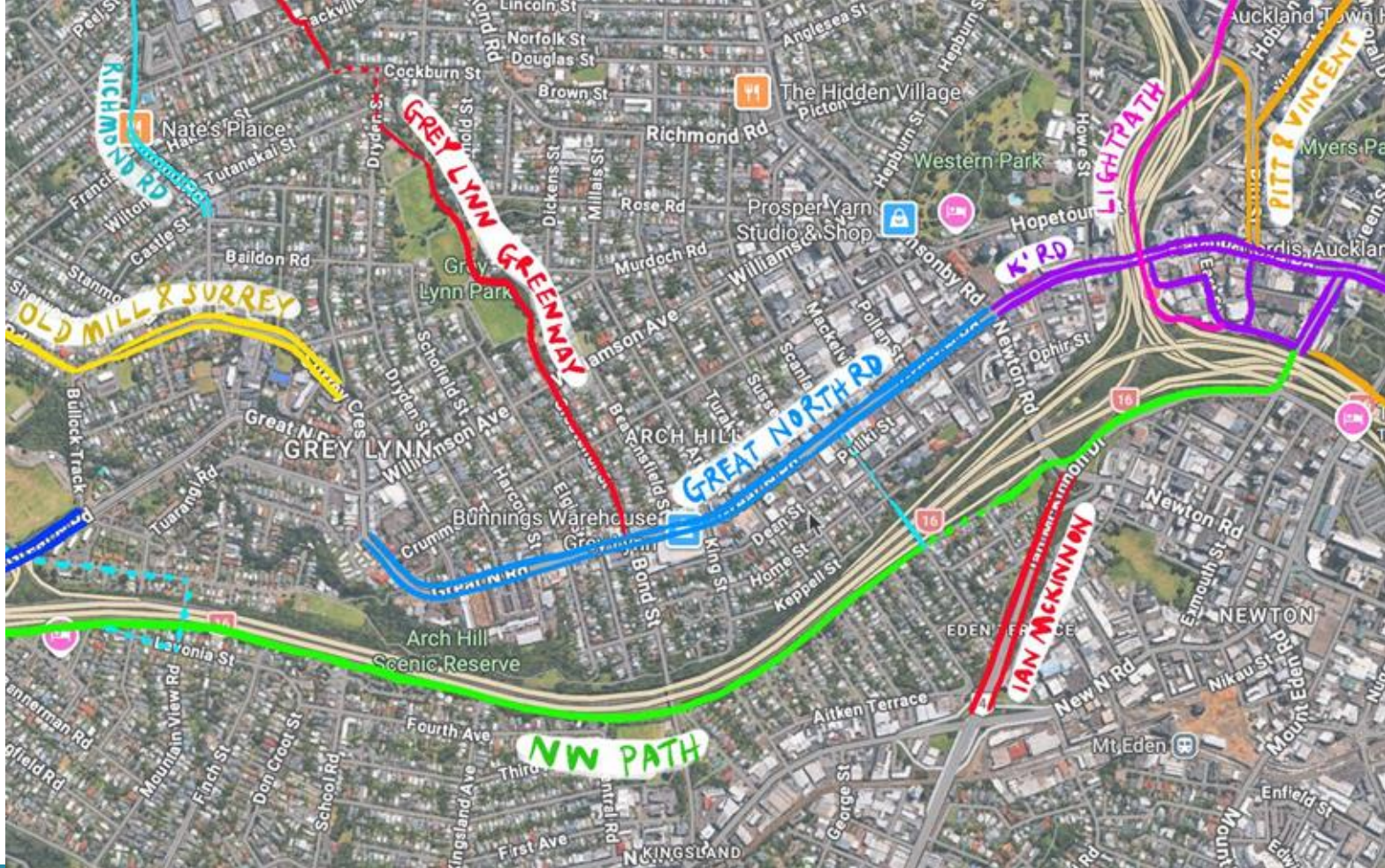
City Centre Loop



Project Wave







The Inner West projects



Auckland is a Cycling City!



... but not
everywhere in
the region



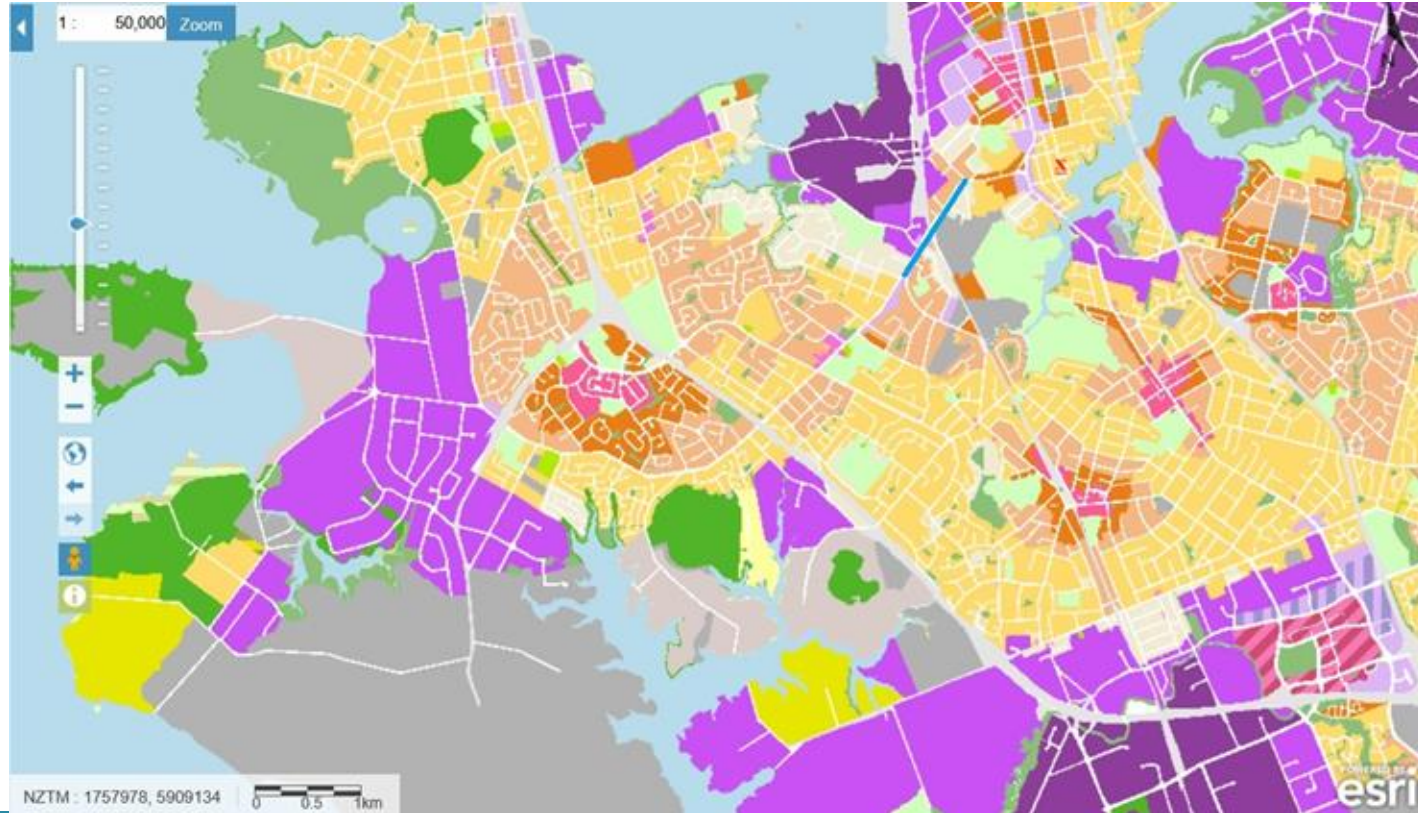
Bike Auckland Part 2: When the network goes pffft



Really, how bad can it be?



Who is even in the South?





Prioritising trucks and cars



Legislative and funding changes

- Funding – changes to GPS and RoNS
- Local Govt Amendment Act
- Local Government (Auckland Council) (Transport Governance) Amendment Bill

GPS and the RoNS

Dead end for cycle and walking paths in new transport budget

Extra cycle and pedestrian paths may join the endangered species list as new transport policy puts active modes on the path less funded



by Matthew Scott 06/03/2024

Share



Funding is flat till 2034

GPS 2024 funding ranges for walking and cycling improvements

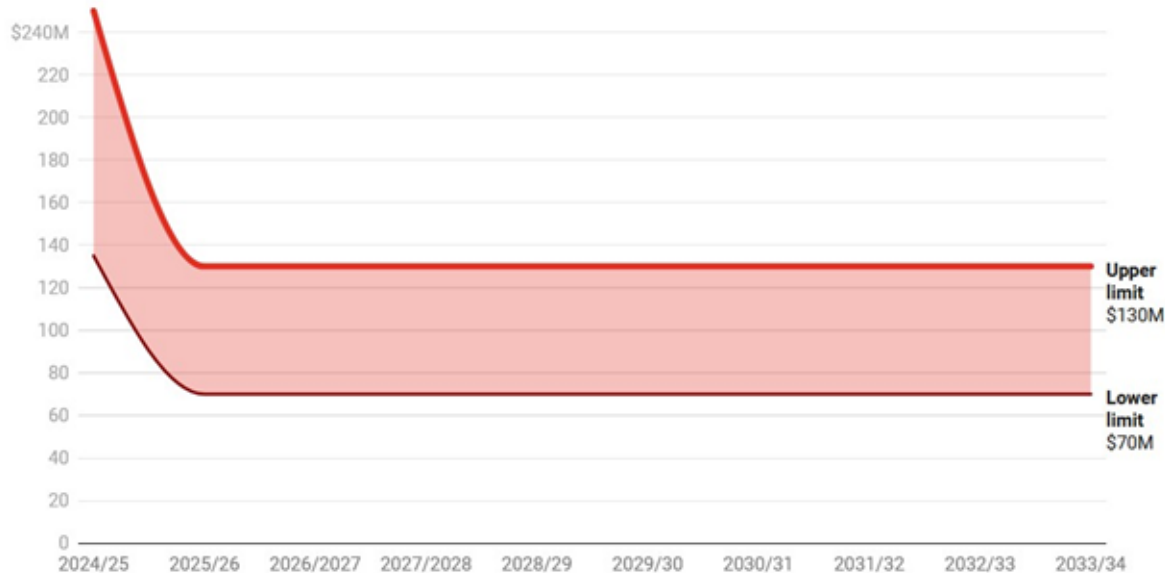


Chart: Matthew Scott • Source: [Transport GPS 2024](#) • [Get the data](#) • Created with [Datawrapper](#)

Source: <https://newsroom.co.nz/2024/03/06/dead-end-for-cycle-and-walking-paths-in-new-transport-budget/>

Roads of National Significance



Source: <https://www.rnz.co.nz/news/thedetail/577698/tens-of-billions-why-the-bill-for-planned-roads-of-national-significance-keeps-going-up>

RoNS present a strategic dilemma for cycling advocates: do we support them if they include cycling infrastructure; or do we philosophically oppose them?



Roads of National Significance



The 17 RoNS



Main legislative changes

- Local Govt Amendment Act
- Local Government (Auckland Council) (Transport Governance) Amendment Bill

Local Government Amendment Act

In performing its role, a local authority must have particular regard to the contribution that the following core services make to its communities: The following services are the core services of a local authority:

- (a) network infrastructure:
- (b) public transport services:
- (c) waste management and minimisation:
- (d) civil defence emergency management:
- (e) libraries, museums, reserves, and other community and recreational facilities.

In performing its role, a local authority must have particular regard to the contribution that the core services make to its communities:

In subsection (1)(d), **civil defence emergency management** has the meaning given to it in section 4 of the Civil Defence Emergency Management Act 2002.

In subsection (1),—

civil defence emergency management has the meaning given to it in section 4 of the Civil Defence Emergency Management Act 2002

public transport service has the meaning given to it in section 5(1) of the Land Transport Management Act 2003

reserve has the meaning given to it in section 2(1) of the Reserves Act 1977

waste management and minimisation has the meaning given to it in section 5(1) of the Waste Minimisation Act 2008

Section 14 amended (Principles relating to local authorities)

Replace section 14(1)(c)(iii) with:

- (iii) the likely impact of any decision on the interests referred to in subparagraphs (i) and (ii):

Replace section 14(1)(h)(i) with:

- (i) the social, economic, and cultural interests of people and communities; and

Replace section 14(2) with:



Local Government (Auckland Council) (Transport Governance) Amendment Bill

- Establishes Auckland Regional Transport Committee with 3 members appointed by the Crown, 3 by the Council, and an independent Chair
- ARTC will be responsible for developing a 30-year transport plan for Auckland, and Auckland's regional land transport plan
- Auckland Transport becomes responsible for PT
- No mention of where active transport will sit (they still don't know)
- Local boards will be responsible for specific decision-making on local roads and collector roads within Auckland

What does this all mean?





**Never waste a
good crisis**



Ka kite anō



“







**Choose from
lots of slide
layouts:
Slide > Apply
layout**







