



AUCKLAND ROAD SAFETY CONTEXT



In 2017, **64 people died** on Auckland roads and **749 were seriously injured.**

The issues are complex and require fundamental mindshifts.

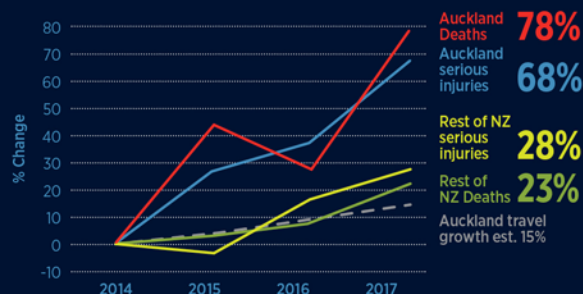
From 2014-17, **Auckland's road deaths and serious injuries increased by around triple** the rate of the rest of New Zealand.



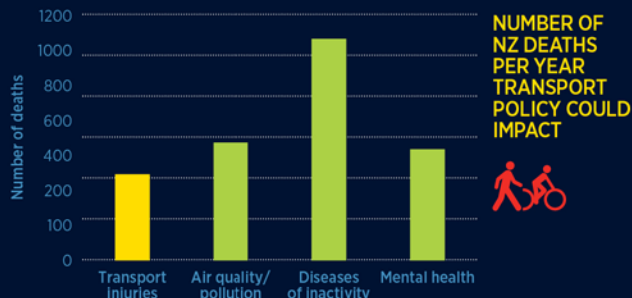
Auckland Council's Regional Fuel Tax consultation showed the **highest priority was road safety (56%).**

#1

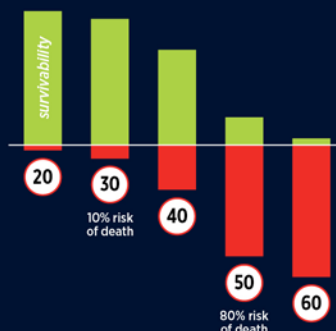
AUCKLAND FACES A ROAD SAFETY CRISIS



Healthy streets enhance life, not reduce it.



SURVIVABLE IMPACT SPEEDS



If a person walking is hit by a vehicle travelling at 30km the chance of dying is 10%. **At 50km the chance of dying is 80%.**



DELIVERING BOLD AND POSITIVE CHANGE



WORKING IN ALIGNMENT WITH PARTNERS IS VITAL TO ACHIEVING OUR AIMS.

The Tāmaki Makaurau Road Safety Governance Group is tasked with becoming an inspirational road safety leadership group.

The Auckland Transport Alignment Plan (ATAP) has a 10 year target to

**reduce deaths
& serious injuries**
by 488 over the next 10 years

**– a 60%
reduction on
the 2017 baseline.**



KEY COMPLETION DATES



AT Road Safety
Programme
Business Case



Auckland Road
Safety Strategy
National Road
Safety Strategy



THE ROAD TO ZERO

New AT programmes range from **speed management** and **additional red light cameras** to **delivering an ambitious safety engineering programme.**



AT STATEMENT OF INTENT AND ATAP DEATHS AND SERIOUS INJURIES TARGETS



We have a once-in-a-generation opportunity to reshape a truly modern world city.



EARLY ACTIONS



21 local board forums



Road safety region wide campaign



New speed limits bylaw consultation



Safe System workshops with AT board and senior managers

FUEL TAX MEANS FASTER ACTION TO SAVE LIVES



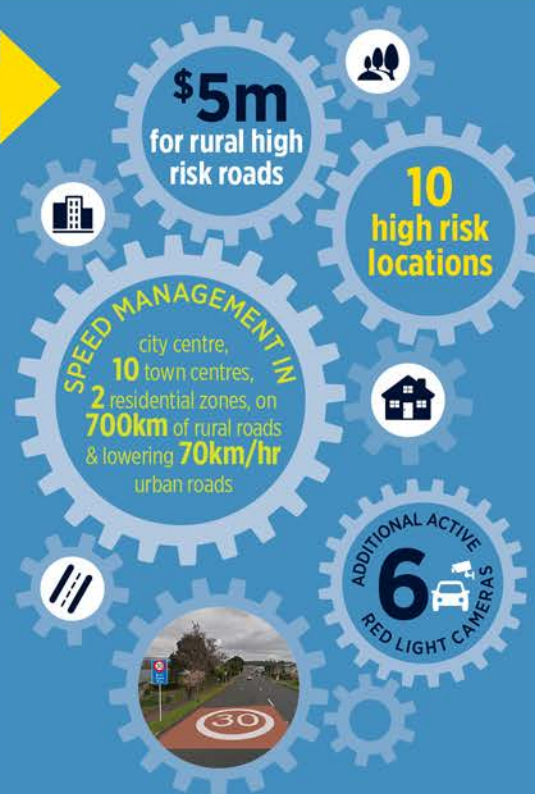
OVER THE NEXT
10 years

the RFT will directly and indirectly contribute to more than half a billion dollars being spent **keeping people safe on Auckland's roads.**



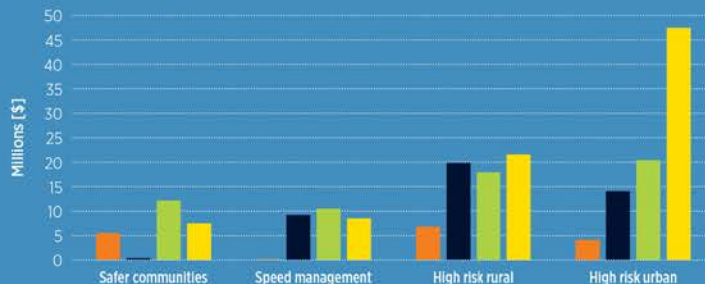
**\$210
million**

of the total
\$700m
capex
in safety
engineering
will come
from the RFT.



AT ROAD SAFETY CAPITAL EXPENDITURE PAST AND FUTURE

2017/18 2018/19 2019/20 2020/21



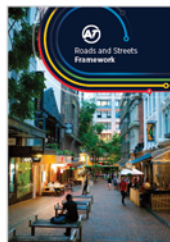
DESIGNING FOR PEOPLE

For Auckland to reach its full potential as a safe and people-friendly place, **traditional approaches to road design must change.**



Source: Lucy Saunders

Roads and Streets Framework being **reviewed**, not removed



Transport Design Manual being finalised for release in coming months



Safe, healthy and sustainable modes go together

