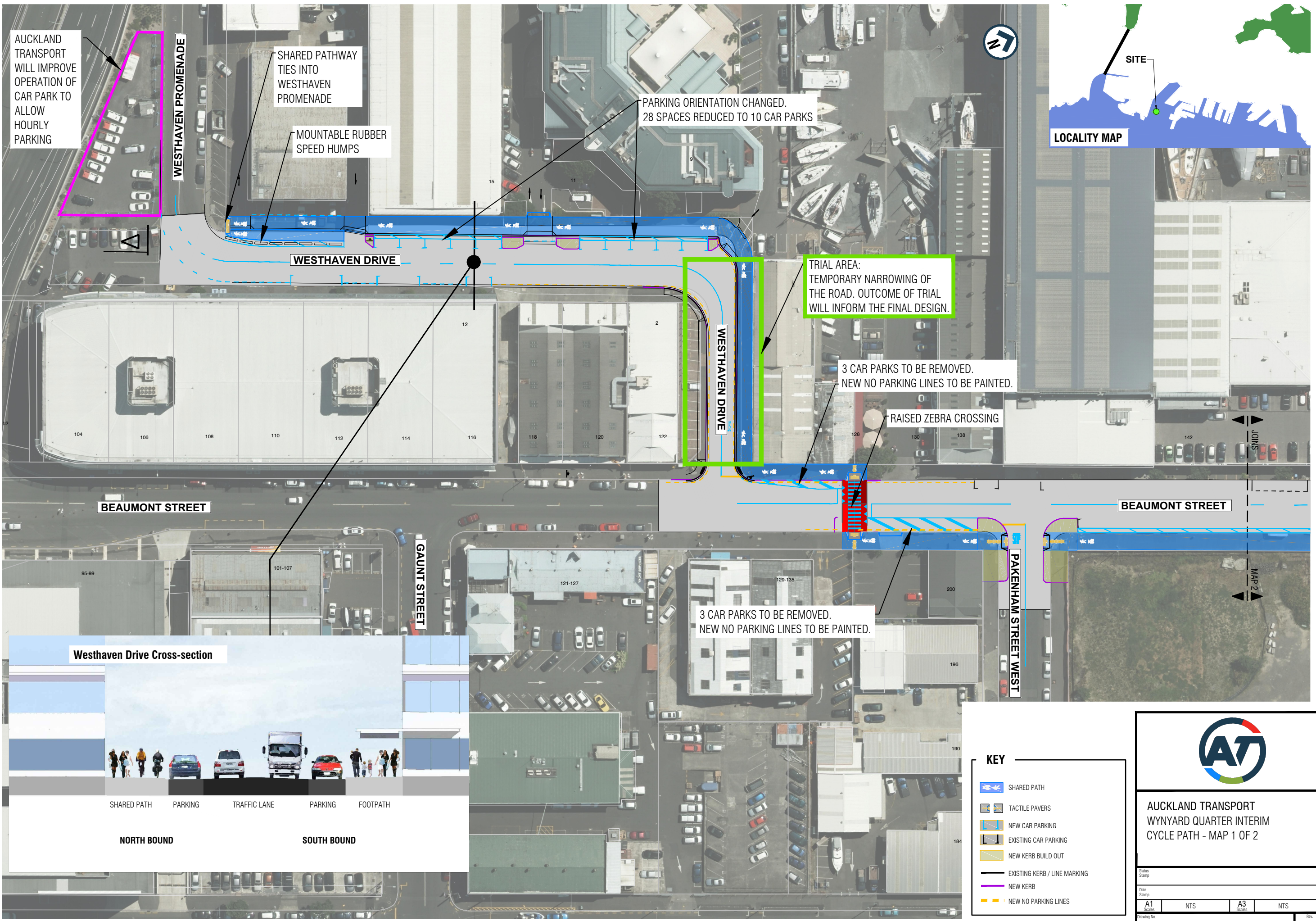


ORIGINAL SIZE A1 200mm DO NOT SCALE - IF IN DOUBT, ASK



AUCKLAND
TRANSPORT
WILL IMPROVE
OPERATION OF
CAR PARK TO
ALLOW
HOURLY
PARKING

WESTHAVEN PROMENADE

SHARED PATHWAY
TIES INTO
WESTHAVEN
PROMENADE

MOUNTABLE RUBBER
SPEED HUMPS

WESTHAVEN DRIVE

PARKING ORIENTATION CHANGED.
28 SPACES REDUCED TO 10 CAR PARKS

TRIAL AREA:
TEMPORARY NARROWING OF
THE ROAD. OUTCOME OF TRIAL
WILL INFORM THE FINAL DESIGN.

3 CAR PARKS TO BE REMOVED.
NEW NO PARKING LINES TO BE PAINTED.

RAISED ZEBRA CROSSING

WESTHAVEN DRIVE

BEAUMONT STREET

BEAUMONT STREET

GAUNT STREET

PAKENHAM STREET WEST

3 CAR PARKS TO BE REMOVED.
NEW NO PARKING LINES TO BE PAINTED.

Westhaven Drive Cross-section



SHARED PATH PARKING TRAFFIC LANE PARKING FOOTPATH

NORTH BOUND

SOUTH BOUND

KEY

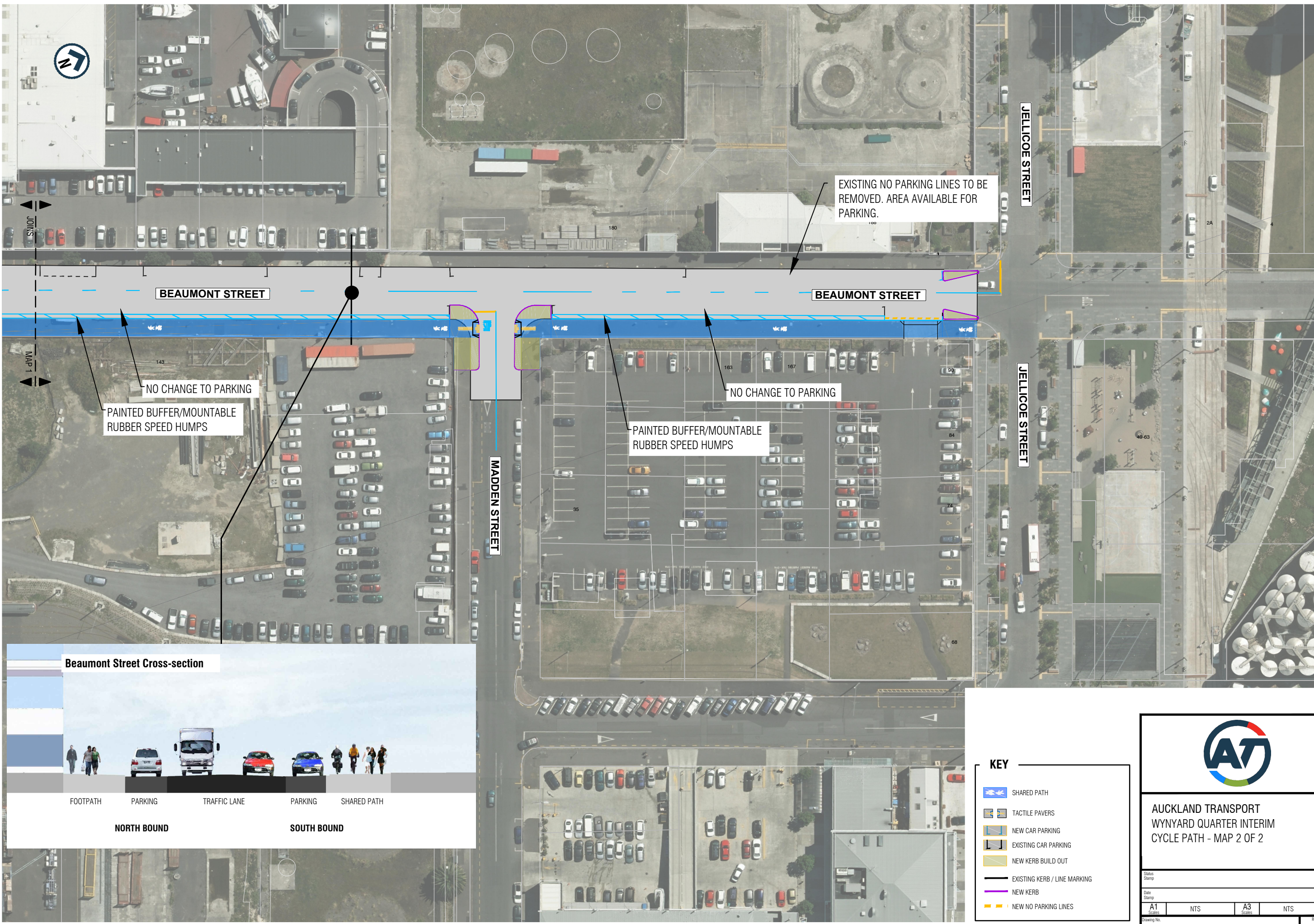
- SHARED PATH
- TACTILE PAVERS
- NEW CAR PARKING
- EXISTING CAR PARKING
- NEW KERB BUILD OUT
- EXISTING KERB / LINE MARKING
- NEW KERB
- NEW NO PARKING LINES



AUCKLAND TRANSPORT
WYNYARD QUARTER INTERIM
CYCLE PATH - MAP 1 OF 2

| | | | | |
|--------------|-------------------|----------|-----|-----|
| Status Stamp | | | | |
| Date Stamp | | | | |
| A1 Scale | NTS | A3 Scale | NTS | Rev |
| Drawing No. | 2014-RFI-63_G030A | | | B |

ORIGINAL SIZE A1 0 10 20 30 40 50 60 70 80 90 100 150 200m DO NOT SCALE - IF IN DOUBT, ASK



AUCKLAND TRANSPORT
WYNYARD QUARTER INTERIM
CYCLE PATH - MAP 2 OF 2

| | | | | |
|--------------|-------------------|----------|-----|------|
| Status Stamp | | | | |
| Date Stamp | | | | |
| A1 Scale | NTS | A3 Scale | NTS | Rev. |
| Drawing No. | 2014-RFI-63_G030B | | | B |