



NZ TRANSPORT AGENCY
WAKA KOTAHI

Grafton Gully Cycleway

31 May 2012

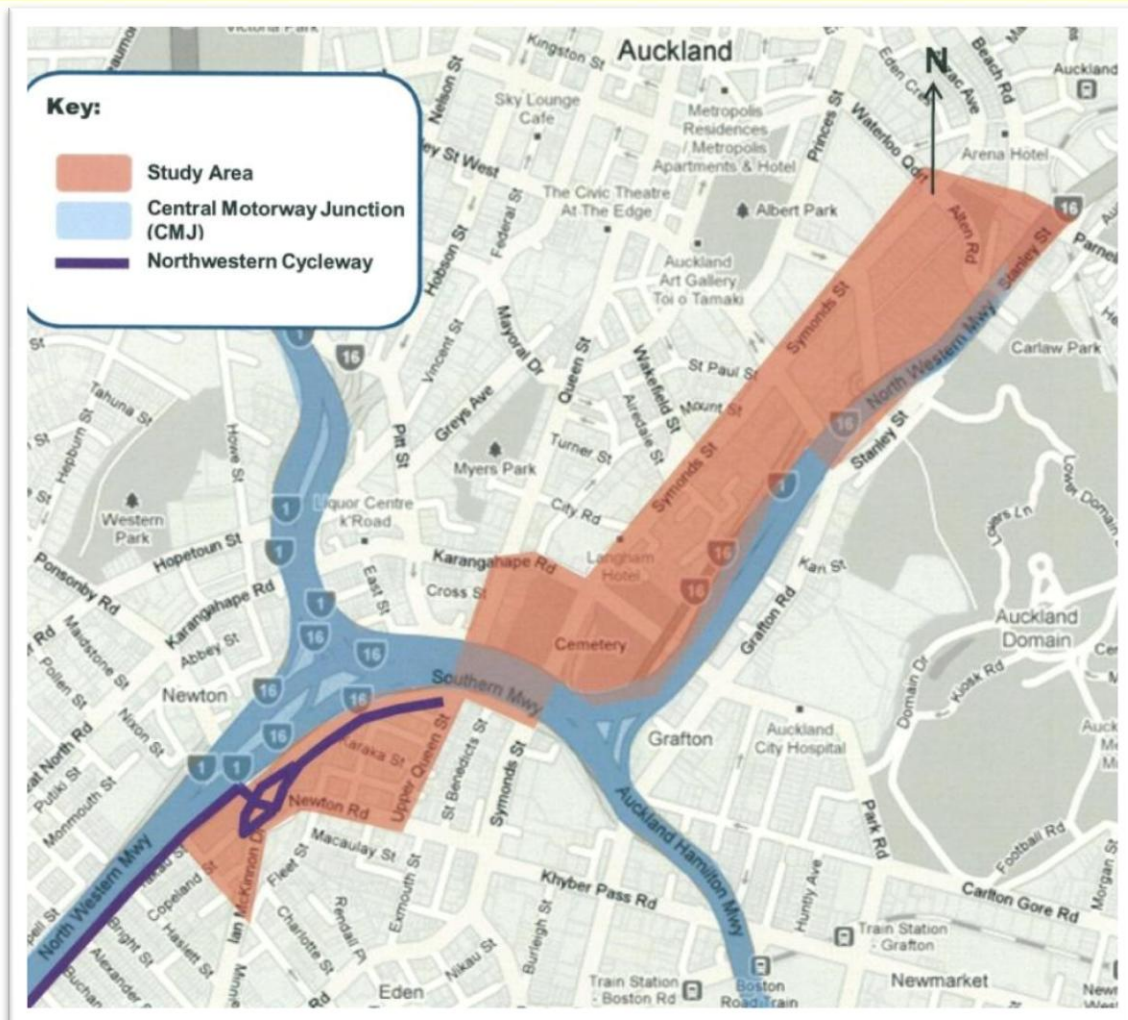
Scott Wickman, Transport Planner, NZTA

Grafton Gully Cycleway

1. **Project Development**
2. **Alignment – Stage 1**
 - a. Upper Queen St
 - b. Symonds St Cemetery
 - c. Grafton Gully
3. **Alignment – Stage 2**
 - a. Wellesley Street East
 - b. Alten Road / Stanley St
 - c. Beach Road
4. **Programme**
 - a. Design & Construction
 - b. Consultation



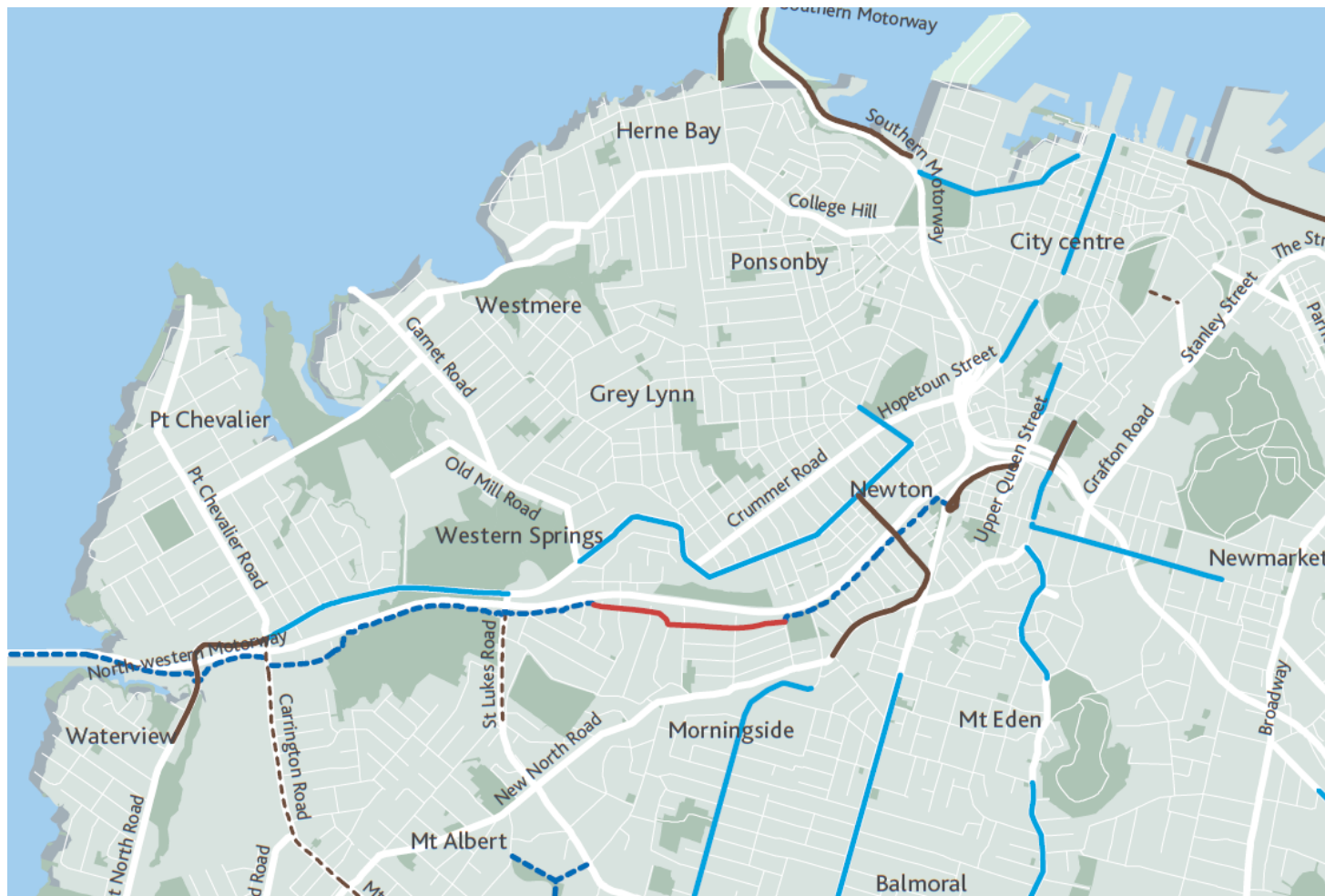
Cycleway Study Area



Northwestern Cycleway

Key

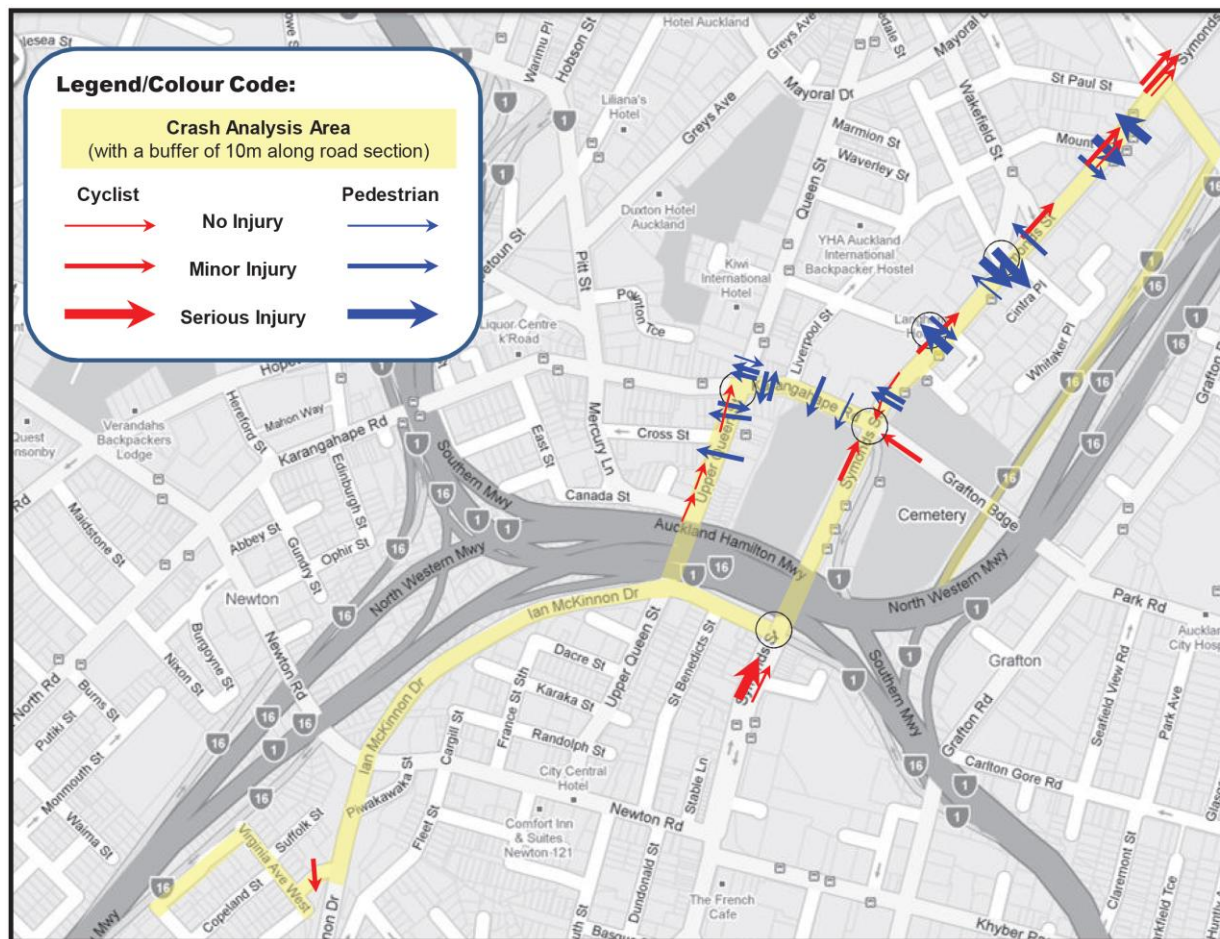
- Off-road cycle links
- On-road cycle lanes
- Shared bus lane
- Shared footpath
- Signposted route



NZ TRANSPORT AGENCY
WAKA KOTAHI

New Zealand Government

Crash History



Project Objectives

Objectives

- Increase the availability and accessibility of off-road cycleways to actual and potential cyclists, with a baseline design catering for at least Category 2 cyclists.
- Improve the overall connectivity of the area by providing cycle links where feasible to, from, and between the surrounding local road and cycle network.
- Maintain network security.
- Respect the special character value of the surrounding area.
- Provide a cost-effective solution that addresses each of the objectives and delivers a quality urban cycle route that appeals to both commuters and recreational users.



Consultation

Cycle Advisory Group (2010)

- ACC, ARC, CAA, HPT, UofA, AUT
- 3 workshops to define issues and work through options

Auckland Council / Auckland Transport (2012)

- CMJ Walking and Cycling Master Plan (Draft)



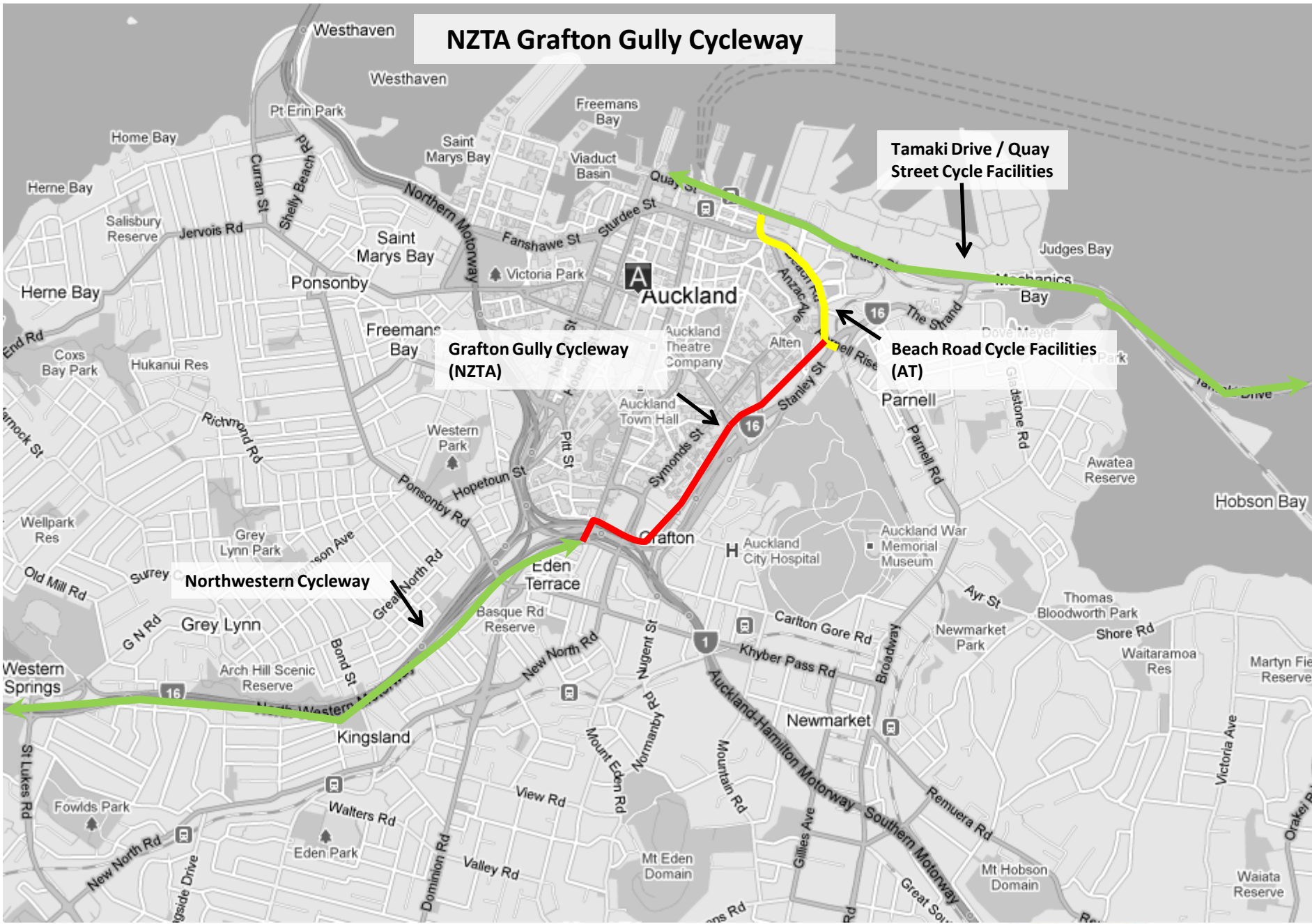
NZTA Grafton Gully Cycleway

Tamaki Drive / Quay Street Cycle Facilities

Grafton Gully Cycleway (NZTA)

Beach Road Cycle Facilities (AT)

Northwestern Cycleway



Grafton Gully Cycleway

[Aerial of Proposed Route](#)

Stage 1 – Upper Queen St





BEGINS



4









FOR SALE
021 637 817
021 555 977
**COMMERCIAL, RESIDENTIAL
MIXED UNITS 150m²**





Stage 1 – Symonds St Cemetery





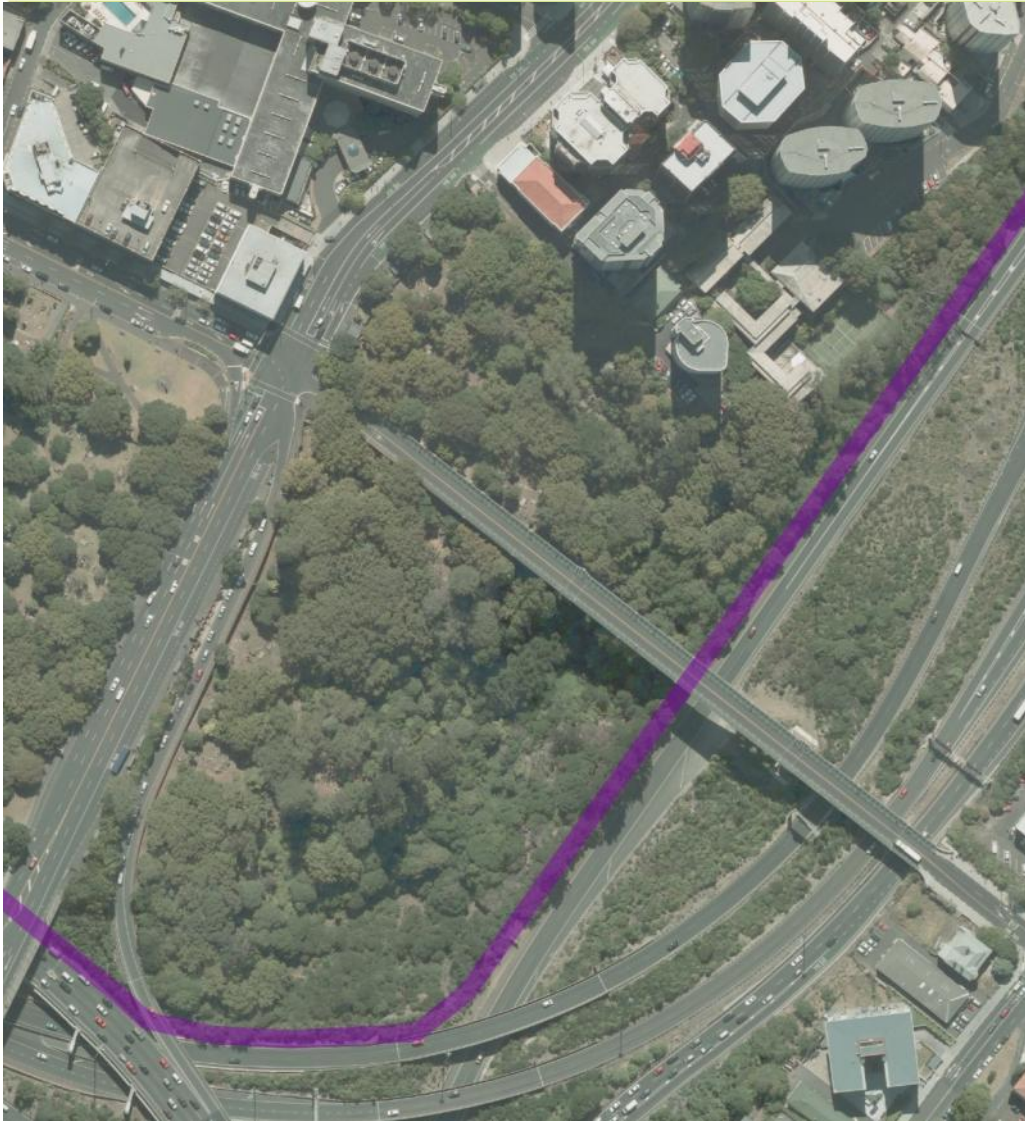








Stage 1 – Grafton Gully







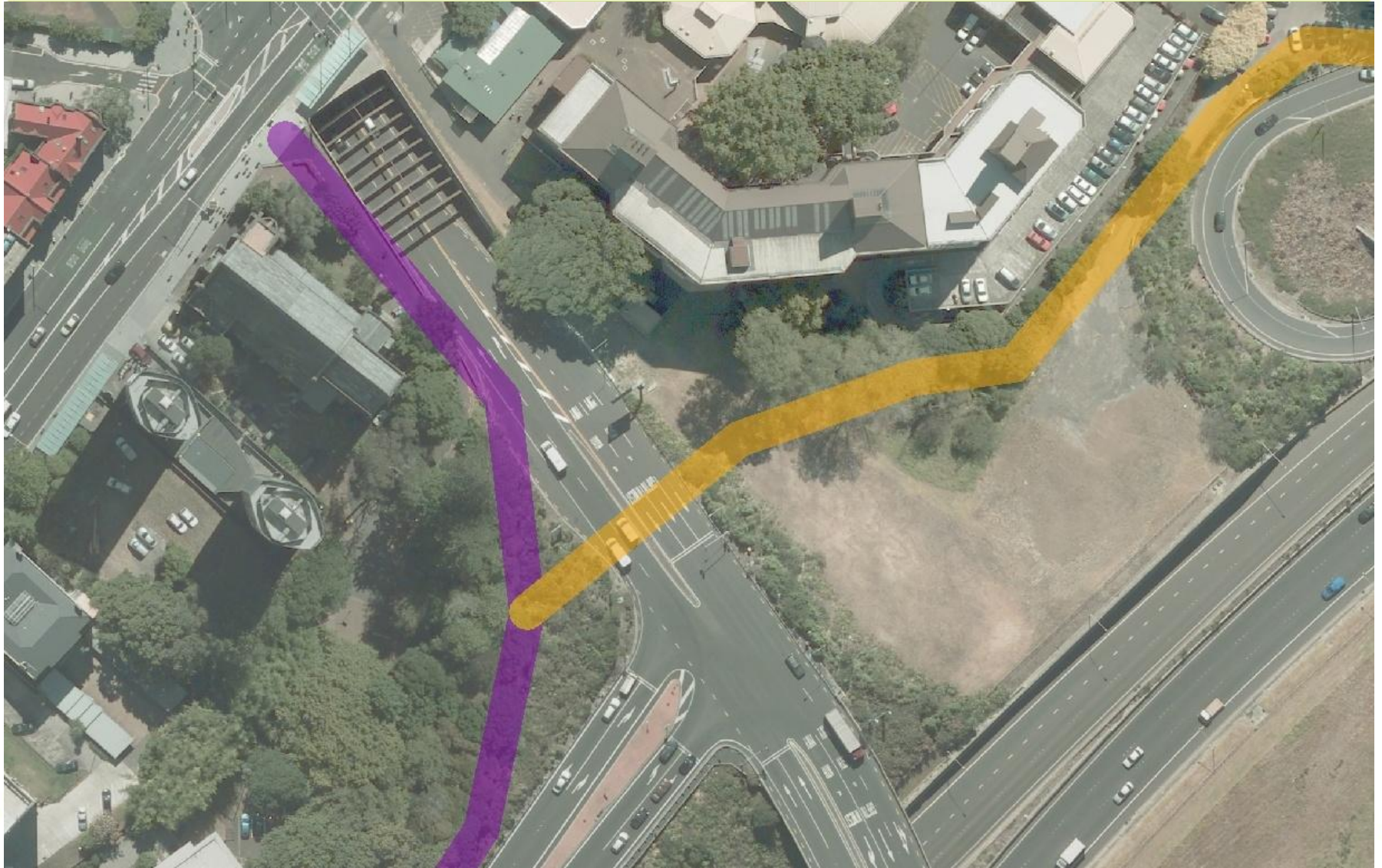








Stage 2 – Wellesley Street East







Stage 2 – Alten Rd / Stanley St





Stage 2 – Beach Road (AT)





Way Forward

1. Detailed Design – start 01 July 2012

2. Consultation

1. Working Group – AT, AC, CAA, UofA, AUT, HPT
2. AC – Parks, Heritage, Built Environment
3. Others – Ngati Whatua, Local Boards, Community Groups, Walk Auckland

3. Statutory Approvals

4. Construction (subject to funding availability)

1. Stage 1 – Oct 2012 – Dec 2013
2. Stage 2 – Oct 2013 – Dec 2014

