

the

Tamaki Tourist Trail

www.greenwaysproject.org.nz

Tamaki Tourist Trail

One route in particular of the proposed *Auckland Greenways Network*, developed by Stephen Smythe (*The Greenways Project Inc*) caught my eye and fired my imagination.

This is the **Tamaki Tourist Trail**. It is a 16 km long walking and cycling trail that connects Otara in South Auckland with Point England in the Eastern Suburbs. Like all greenways it is a safe and pleasant way of getting around, and takes active travel off the busy roads!

Since the time of the *Tainui* the Tamaki Estuary has been an important way of travelling around the isthmus. However the development of the Southern Motorway has tended to cut off each peninsula suburb from each other. And as we know few people walk or cycle to work, and very few kids cycle to school in South Auckland.

The **Tamaki Tourist Trail** connects Otara to Otahuhu, Otahuhu to Mt Wellington, Mt Wellington to Panmure, and Panmure to Point England. Featuring a completely flat scenic route, on a combination of existing quiet neighbourhood streets, using some existing off road paths, and new off road walking and cycling trails along the foreshore.

The trail follows the left bank of the Tamaki Estuary, all the way from from the Ngati Otara Park, to the Point England Reserve. A bridge is required beside the Southern Motorway over the Otahuhu Creek, and a couple of smaller bridges and some

board walks are needed to get past the Bowden Road industrial area.

The **Tamaki Tourist Trail** has opportunities to connect with a future route from the Auckland Airport, and Manukau Harbour to the south. It will link into the existing *Pakuranga Rotary Pathway* to the east, and the future AMETI improvements to the west. At the the northern end it connects to the existing shell path to the Tahuna Torea Nature Reserve at Glendowie, as well as the existing concrete pathways to Glen Innes and the train station.

A planned link from Glen Innes up the hill to St Johns Road ridge would connect to the proposed Purewa Valley walkway, and hence to the downtown area across Hobson Bay. What an amazing, safe and scenic way to come from the airport to the central city! Obviously it will connect with the proposed *Auckland Cycle Network* wherever possible to enhance the network.

The new work should meet all relevant standards (such as *Sustrans: The Connect2 Greenways Guide*) for a shared use pathway - be at least 3 m wide, suitably paved, lit and signposted. Interested parties include NZTA for the route beside the motorway, Auckland Council for access through the parks and reserves, the Local Boards - Otara, Otahuhu and Tamaki. Very little private land is affected, the main exception being that access is required past the Otara Power Station along the foreshore of Otara Lake.



TAMAKI ESTUARY



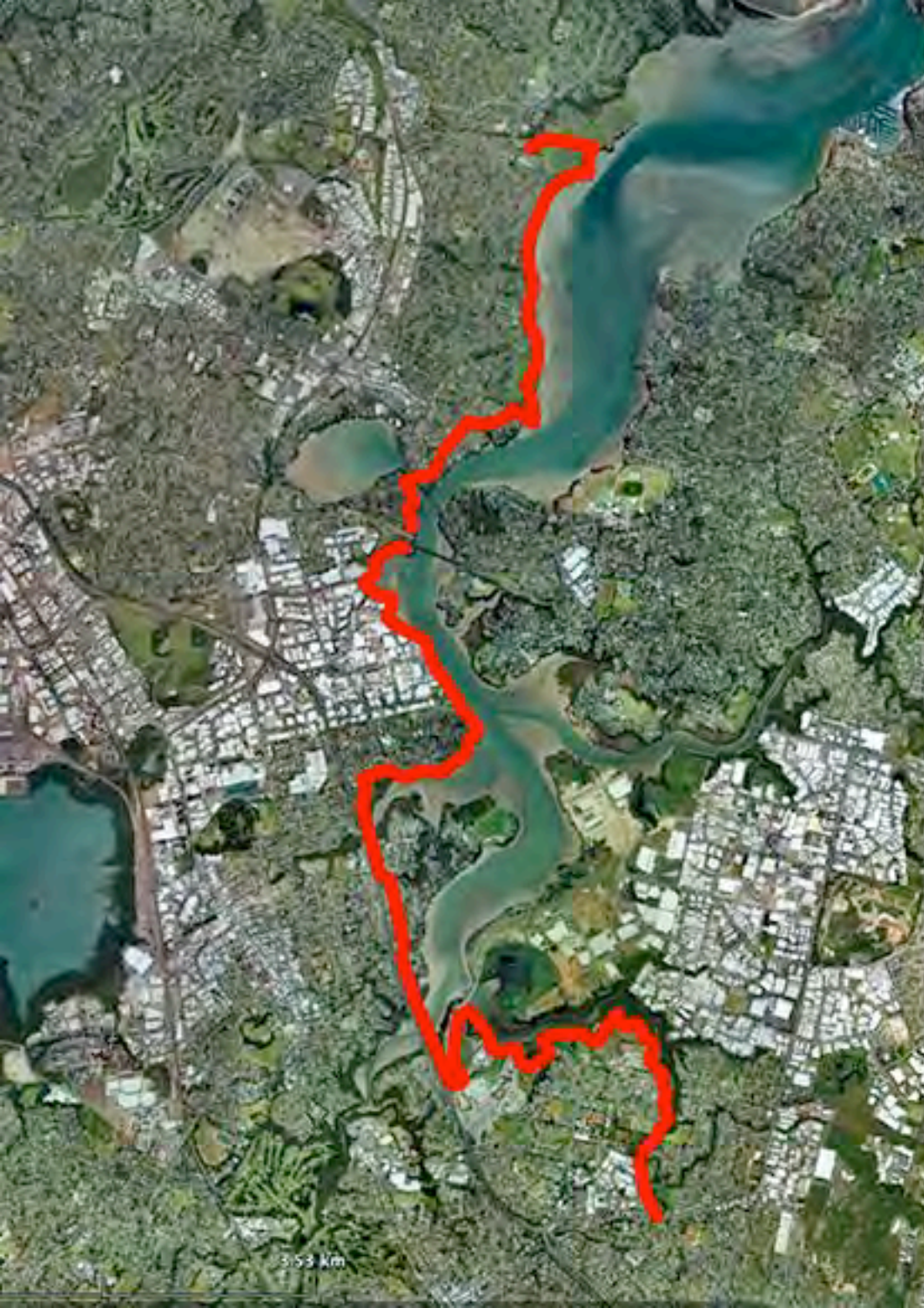
TAMAKI TOURIST TRAIL
connects Otara to Point England
using the left bank of the
Tamaki Estuary



TAMAKI TOURIST TRAIL
- linking the river suburbs



***Remember a Greenway
is a safe, pleasant, off road
walking and cycling route!**



TAMAKI TOURIST TRAIL

uses a mixture of existing off-road walking and cycling paths, quiet suburban back roads and new shared trails on foreshore reserves.

***The route is dead flat - no hills.**

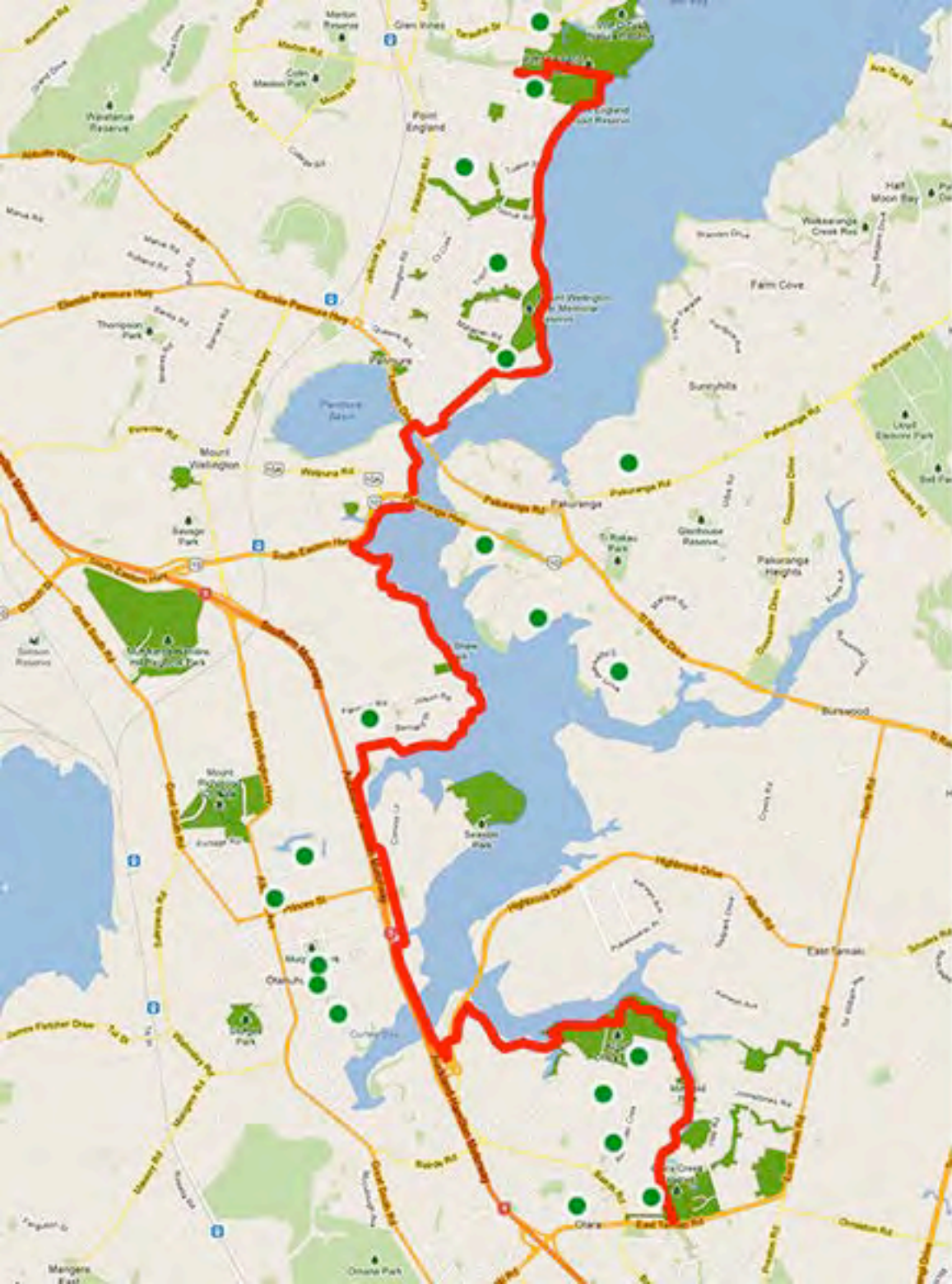




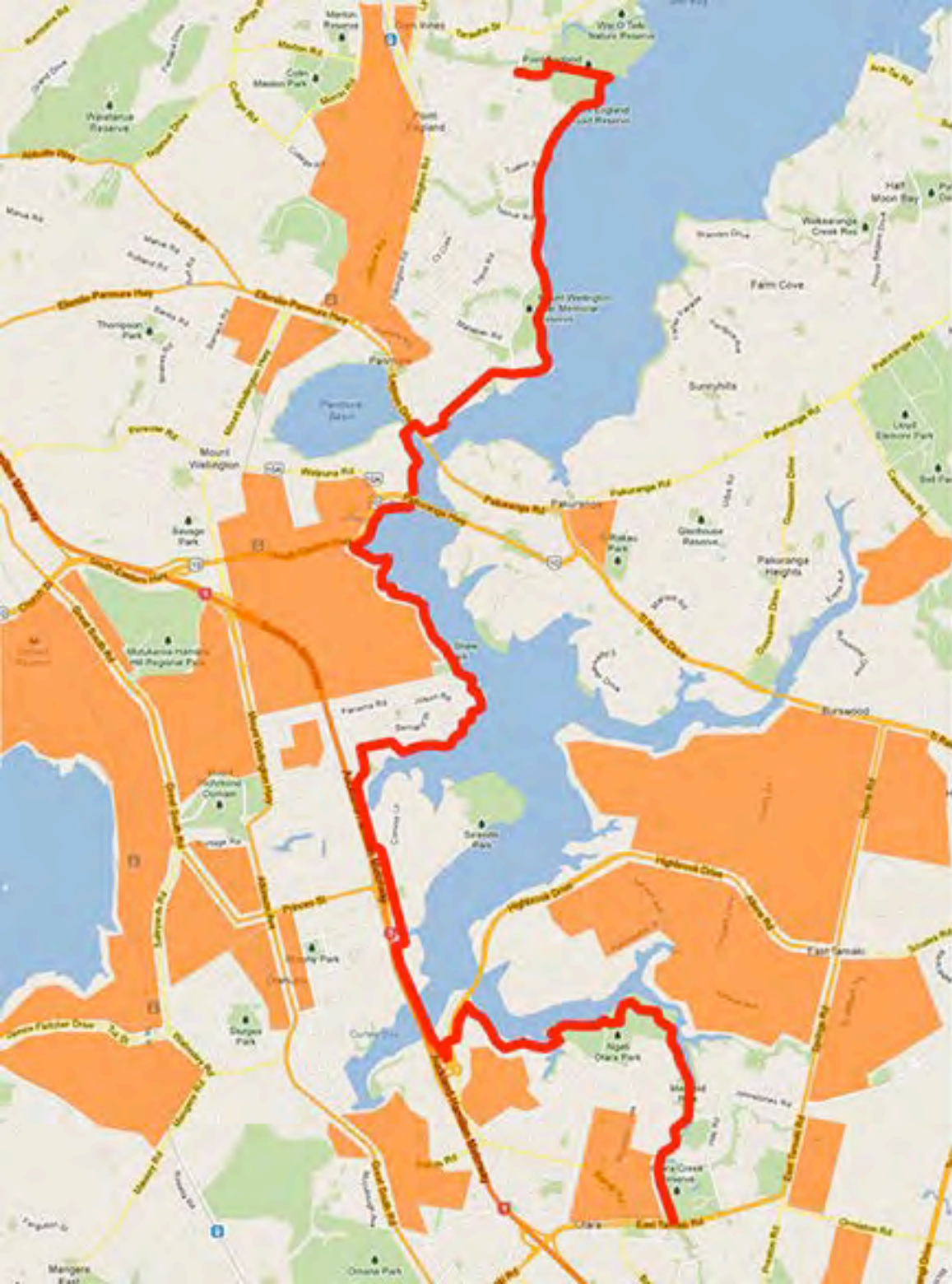
TAMAKI TOURIST TRAIL

starts at
Otara Creek Reserve
off East Tamaki Road,
heads North
through Otara,
Otahuhu,
Mt Wellington,
Panmure,
and finishes at
Point England Reserve
on Point England Road.

**total distance about 16 km
this is a cycling super-highway!*



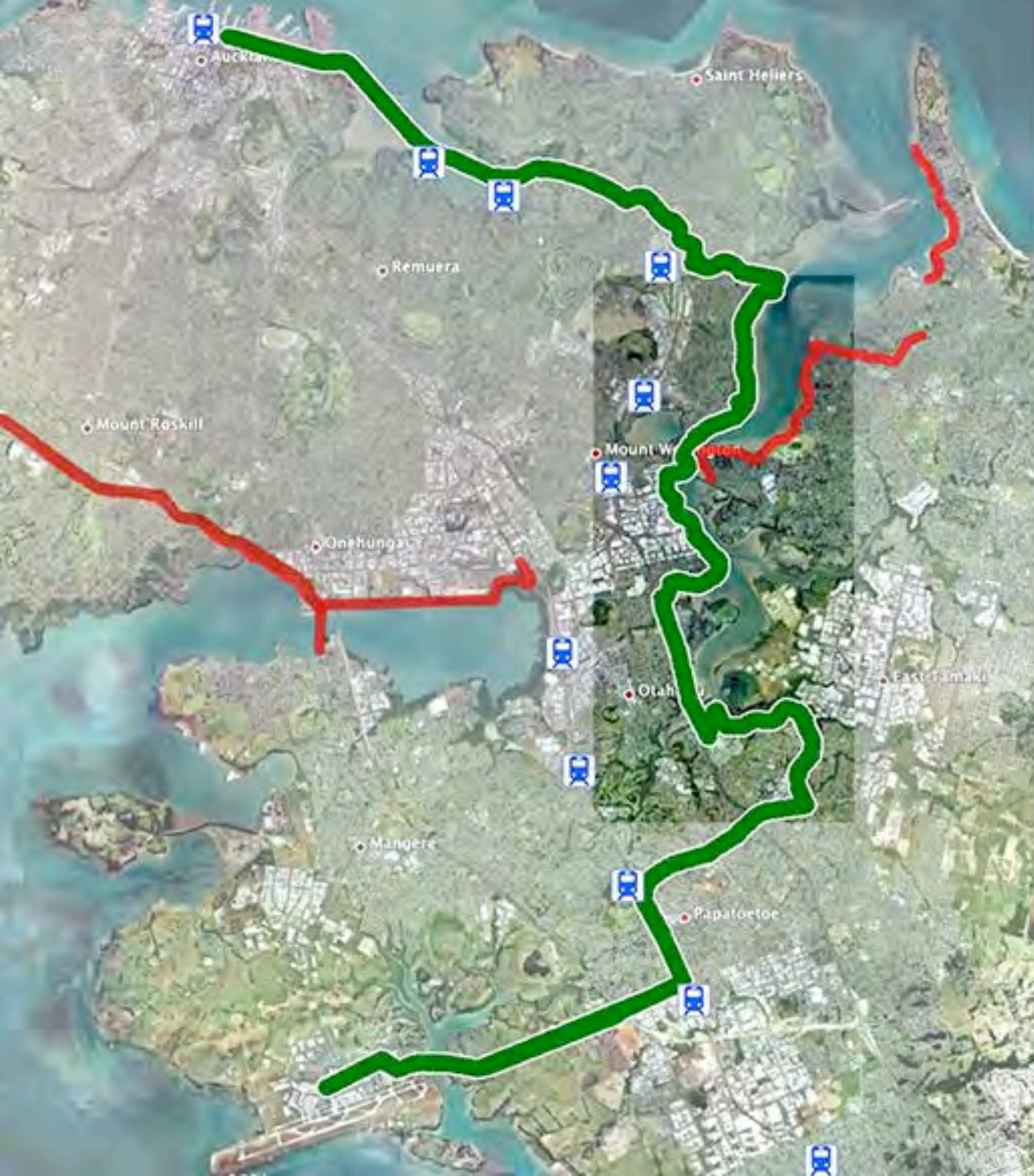
TAMAKI TOURIST TRAIL
*linking local schools and parks!



TAMAKI TOURIST TRAIL
*walk or cycle to work!



Projected Auckland Greenways network



A future Greenway connecting
Auckland International Airport
to downtown incorporating the
TAMAKI TOURIST TRAIL

 existing train stations

Tamaki Tourist Trail

Contact: *The Greenways Project Inc.*

Stephen Smythe
021 766 915

stephen.smythe@greenwaysproject.org.nz

Kim Sinclair
0210 658 054
kimsin@ihug.co.nz

Andrew Trevelyan
027 471 4304
ajtjeg@xtra.co.nz



Gaz Sanvicens
021 023 15758
gazsanvicens@gmail.com

Gilbert Brakey
0274 378 867
biolandscape@xtra.co.nz

www.greenwaysproject.org.nz

www.greenwaysproject.org.nz